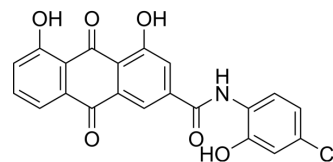


α -Synuclein inhibitor 10

Cat. No.:	HY-157308
Molecular Formula:	C ₂₁ H ₁₂ ClNO ₆
Molecular Weight:	409.78
Target:	α -synuclein
Pathway:	Neuronal Signaling
Storage:	Please store the product under the recommended conditions in the Certificate of Analysis.



BIOLOGICAL ACTIVITY

Description

α -Synuclein inhibitor 10 (compound a8) inhibits the activity of α -Syn aggregation with low IC₅₀ value (1.08 μ M). α -Synuclein inhibitor 10 exhibits good binding affinity to α -Syn residues. α -Synuclein inhibitor 10 can be used in the research of Parkinson's disease (PD)^[1].

REFERENCES

[1]. Wei Zhang, et al. The potential of Rhein's aromatic amines for Parkinson's disease prevention and treatment: α -Synuclein aggregation inhibition and disaggregation of preformed fibers. *Bioorg Med Chem Lett*. 2024.

Caution: Product has not been fully validated for medical applications. For research use only.

Tel: 609-228-6898

Fax: 609-228-5909

E-mail: tech@MedChemExpress.com

Address: 1 Deer Park Dr, Suite Q, Monmouth Junction, NJ 08852, USA