

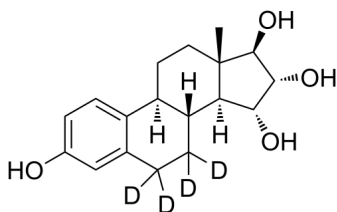
## Estetrol-d4

Cat. No.: HY-15731S  
Batch No.: 402044  
Molecular Formula: C<sub>18</sub>H<sub>20</sub>D<sub>4</sub>O<sub>4</sub>

### ANALYTICAL DATA

Theoretical: C(70.10%), H(9.15%), N(-)  
Result: C(65.93%), H(8.30%), N(-)

Chemical Structure:



**Caution: Product has not been fully validated for medical applications. For research use only.**

Tel: 609-228-6898

Fax: 609-228-5909

E-mail: [tech@MedChemExpress.com](mailto:tech@MedChemExpress.com)

Address: 1 Deer Park Dr, Suite Q, Monmouth Junction, NJ 08852, USA