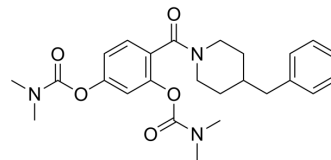


BChE-IN-22

Cat. No.:	HY-157384
Molecular Formula:	C ₂₅ H ₃₁ N ₃ O ₅
Molecular Weight:	453.53
Target:	Cholinesterase (ChE)
Pathway:	Neuronal Signaling
Storage:	Please store the product under the recommended conditions in the Certificate of Analysis.



BIOLOGICAL ACTIVITY

Description	BChE-IN-22 (compound 5A) is a selective eqBChE inhibitor (IC ₅₀ : 0.53 μM), has anti-inflammatory and neuroprotective activities. BChE-IN-22 can inhibit cell damage caused by Aβ ₂₅₋₃₅ (HY-P0128) and improve cognitive dysfunction caused by Scopolamine (HY-N0296) ^[1] .
IC ₅₀ & Target	eqBChE 0.53 μM (IC ₅₀)

REFERENCES

[1]. Zhou Y, et al. Development of novel salicylic acid-donepezil-rivastigmine hybrids as multifunctional agents for the treatment of Alzheimer's disease. J Enzyme Inhib Med Chem. 2023 Dec;38(1):2231661.

Caution: Product has not been fully validated for medical applications. For research use only.

Tel: 609-228-6898

Fax: 609-228-5909

E-mail: tech@MedChemExpress.com

Address: 1 Deer Park Dr, Suite Q, Monmouth Junction, NJ 08852, USA