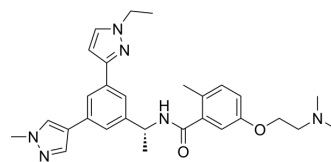


## Jun12682

Cat. No.:	HY-157403
Molecular Formula:	C <sub>29</sub> H <sub>36</sub> N <sub>6</sub> O <sub>2</sub>
Molecular Weight:	500.64
Target:	SARS-CoV
Pathway:	Anti-infection
Storage:	Please store the product under the recommended conditions in the Certificate of Analysis.



### BIOLOGICAL ACTIVITY

#### Description

Jun12682 is an inhibitor of SARS-CoV-2 papain-like protease. Jun12682 inhibits PL<sup>Pro</sup> with a K<sub>i</sub> value of 37.7 nM. Jun12682 has EC<sub>50</sub> value of 1.1 μM in the FlipGFP PL<sup>Pro</sup> assay. Jun12682 has orally activity<sup>[1]</sup>.

### REFERENCES

[1]. Bin Tan, et al. Design of SARS-CoV-2 papain-like protease inhibitor with antiviral efficacy in a mouse model. bioRxiv. 2023.

**Caution: Product has not been fully validated for medical applications. For research use only.**

Tel: 609-228-6898

Fax: 609-228-5909

E-mail: tech@MedChemExpress.com

Address: 1 Deer Park Dr, Suite Q, Monmouth Junction, NJ 08852, USA