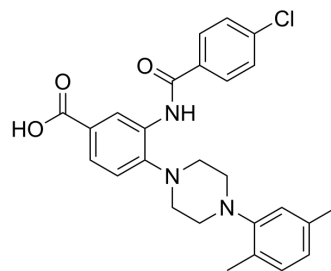


CRM1-IN-3

Cat. No.:	HY-157412
CAS No.:	1114628-25-9
Molecular Formula:	C ₂₆ H ₂₆ ClN ₃ O ₃
Molecular Weight:	463.96
Target:	CRM1
Pathway:	Membrane Transporter/Ion Channel
Storage:	Please store the product under the recommended conditions in the Certificate of Analysis.



BIOLOGICAL ACTIVITY

Description

CRM1-IN-3 (B28) is a noncovalent CRM1 inhibitor. CRM1-IN-3 can be used for the research of protein localization and tumor [1].

REFERENCES

[1]. Li C, et al. Discovery of a Hidden Pocket beneath the NES Groove by Novel Noncovalent CRM1 Inhibitors. J Med Chem. 2023 Dec 18.

Caution: Product has not been fully validated for medical applications. For research use only.

Tel: 609-228-6898

Fax: 609-228-5909

E-mail: tech@MedChemExpress.com

Address: 1 Deer Park Dr, Suite Q, Monmouth Junction, NJ 08852, USA