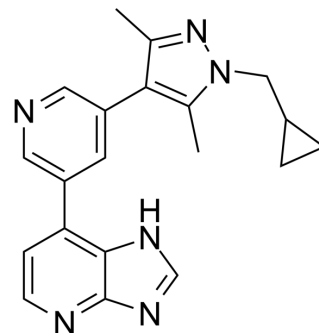


BET-IN-21

Cat. No.:	HY-157430
CAS No.:	3014815-06-3
Molecular Formula:	C ₂₀ H ₂₀ N ₆
Molecular Weight:	344.41
Target:	Epigenetic Reader Domain
Pathway:	Epigenetics
Storage:	Please store the product under the recommended conditions in the Certificate of Analysis.



BIOLOGICAL ACTIVITY

Description

BET-IN-21 (compound 16) is a blood-brain barrier-permeable extra terminal domain (BET) inhibitor with the K_i of 230 nM. BET-IN-21 inhibits microglia activation and has ameliorative effects on experimental autoimmune encephalomyelitis mice^[1].

REFERENCES

[1]. Chen X, et al. Discovery of a brain-permeable bromodomain and extra terminal domain (BET) inhibitor with selectivity for BD1 for the treatment of multiple sclerosis. Eur J Med Chem. Published online December 19, 2023.

Caution: Product has not been fully validated for medical applications. For research use only.

Tel: 609-228-6898

Fax: 609-228-5909

E-mail: tech@MedChemExpress.com

Address: 1 Deer Park Dr, Suite Q, Monmouth Junction, NJ 08852, USA