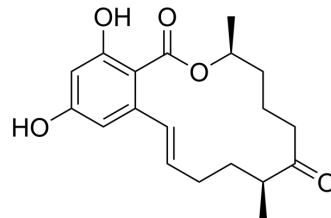


(8S)-Methyl zearalenone

Cat. No.:	HY-157452
Molecular Formula:	C ₁₉ H ₂₄ O ₅
Molecular Weight:	332.39
Target:	Others
Pathway:	Others
Storage:	Please store the product under the recommended conditions in the Certificate of Analysis.



BIOLOGICAL ACTIVITY

Description	(8S)-Methyl zearalenone (ZEA analogue 5) is a selective CBR1 (carbonyl reductase 1) inhibitor, with an IC ₅₀ of 0.21 μM ^[1] .
--------------------	---

REFERENCES

[1]. Tobias J Zimmermann, et al. Discovery of a potent and selective inhibitor for human carbonyl reductase 1 from propionate scanning applied to the macrolide zearalenone. *Bioorg Med Chem*. 2009 Jan 15;17(2):530-6.

Caution: Product has not been fully validated for medical applications. For research use only.

Tel: 609-228-6898

Fax: 609-228-5909

E-mail: tech@MedChemExpress.com

Address: 1 Deer Park Dr, Suite Q, Monmouth Junction, NJ 08852, USA