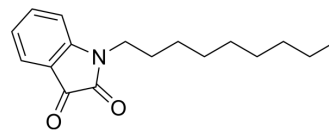


BChE-IN-25

Cat. No.:	HY-157520
CAS No.:	79183-25-8
Molecular Formula:	C ₁₇ H ₂₃ NO ₂
Molecular Weight:	273.37
Target:	Cholinesterase (ChE)
Pathway:	Neuronal Signaling
Storage:	Please store the product under the recommended conditions in the Certificate of Analysis.



BIOLOGICAL ACTIVITY

Description	BChE-IN-25 (compound 4l) is a selective BChE inhibitor (IC ₅₀ : 3.77 μM), which is 22 times more selective for BChE than AChE [1].
IC ₅₀ & Target	3.77 μM (BChE) ^[1]

REFERENCES

[1]. Montazer MN, et al. Design, synthesis, and biological studies of the new cysteine-N-arylacetamide derivatives as a potent urease inhibitor. Naunyn Schmiedebergs Arch Pharmacol. 2024 Jan;397(1):305-315.

Caution: Product has not been fully validated for medical applications. For research use only.

Tel: 609-228-6898

Fax: 609-228-5909

E-mail: tech@MedChemExpress.com

Address: 1 Deer Park Dr, Suite Q, Monmouth Junction, NJ 08852, USA