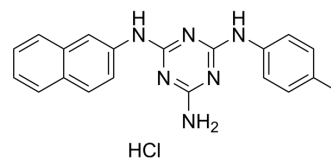


NCI-14465

Cat. No.:	HY-157522
CAS No.:	1144534-31-5
Molecular Formula:	C ₂₀ H ₁₉ ClN ₆
Molecular Weight:	378.86
Target:	Phosphodiesterase (PDE)
Pathway:	Metabolic Enzyme/Protease
Storage:	Please store the product under the recommended conditions in the Certificate of Analysis.



BIOLOGICAL ACTIVITY

Description

NCI-14465 is an ectonucleotide pyrophosphatase/phosphodiesterase (ENPP1) inhibitor with an IC₅₀ of 26.4 μM. NCI-14465 can be used in cancer research^[1].

REFERENCES

[1]. Rohilla A, et al. Structure-based virtual screening and in vitro validation of inhibitors of cyclic dinucleotide phosphodiesterases ENPP1 and CdnP. *Microbiol Spectr.* 2024 Jan 11;12(1):e0201223.

Caution: Product has not been fully validated for medical applications. For research use only.

Tel: 609-228-6898

Fax: 609-228-5909

E-mail: tech@MedChemExpress.com

Address: 1 Deer Park Dr, Suite Q, Monmouth Junction, NJ 08852, USA