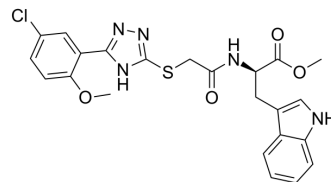


SHP2-IN-24

Cat. No.:	HY-157535
Molecular Formula:	C ₂₃ H ₂₂ ClN ₅ O ₄ S
Molecular Weight:	499.97
Target:	SHP2
Pathway:	Protein Tyrosine Kinase/RTK
Storage:	Please store the product under the recommended conditions in the Certificate of Analysis.



BIOLOGICAL ACTIVITY

Description	SHP2-IN-24 (compound 111675) is a potent SHP2 inhibitor with an IC ₅₀ value of 0.878 μM and a K _i value of 0.118 μM ^[1] .
IC ₅₀ & Target	IC ₅₀ : 0.878 μM (SHP2) ^[1] K _i : 0.118 μM (SHP2) ^[1]

REFERENCES

[1]. Mitra R, et al. Identification of new small molecule allosteric SHP2 inhibitor through pharmacophore-based virtual screening, molecular docking, molecular dynamics simulation studies, synthesis and in vitro evaluation. J Biomol Struct Dyn. 2023 Dec 14:1-20.

Caution: Product has not been fully validated for medical applications. For research use only.

Tel: 609-228-6898

Fax: 609-228-5909

E-mail: tech@MedChemExpress.com

Address: 1 Deer Park Dr, Suite Q, Monmouth Junction, NJ 08852, USA