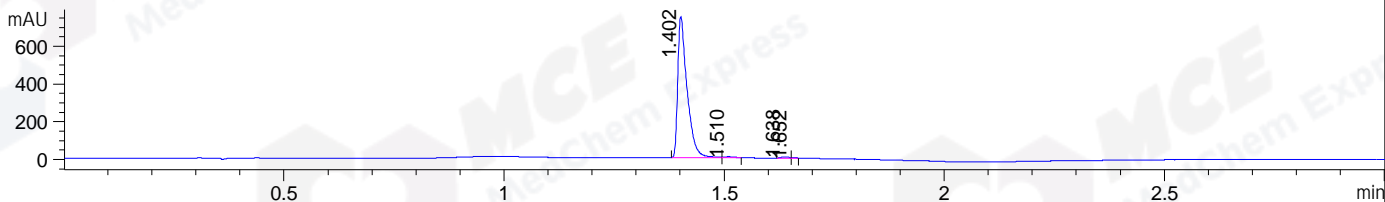
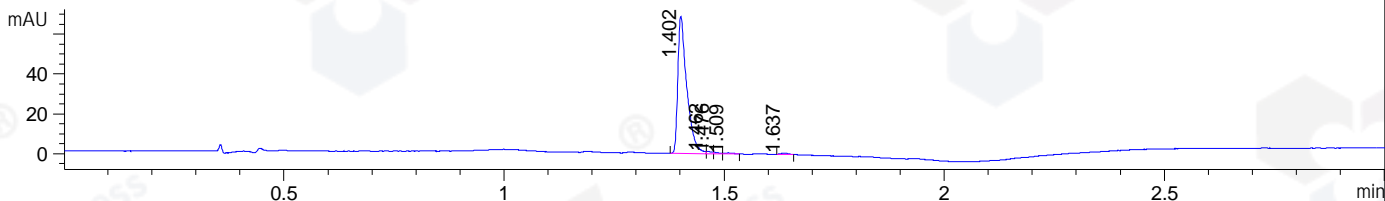


File ..DATA\2019\20190929\720\CPK2019-929-12265-.D Tgt Mass (CHM):
 Injection Date : 29 Sep 19 11:26 am +0800 Seq. Line : 30
 Sample Name : CPK2019-929-12265 Location : P1-A-07
 Acq. Operator : bgd_1571 Inj : 1
 Spec. Reported : MS Integration Inj Volume : 0.6 ul
 Acq. Method : D:\Chem32\1\data\2019\20190929\720\1-POS-3MIN.M
 Analysis Method : D:\CHEM32\1\DATA\2019\20190929\720\1-POS-3MIN.M
 Catalog No : HY-15768 Batch#12265
 Method Info : Mobile Phase: A: water(0.01%TFA) B:ACN(0.01%TFA)
 Gradient: 5% to 95%B within 1.3 min
 Flow Rate :1.8ml/min
 Column :SunFire C18, 4.6*50mm,3.5um A-RP-433
 Oven Temperature : 45□

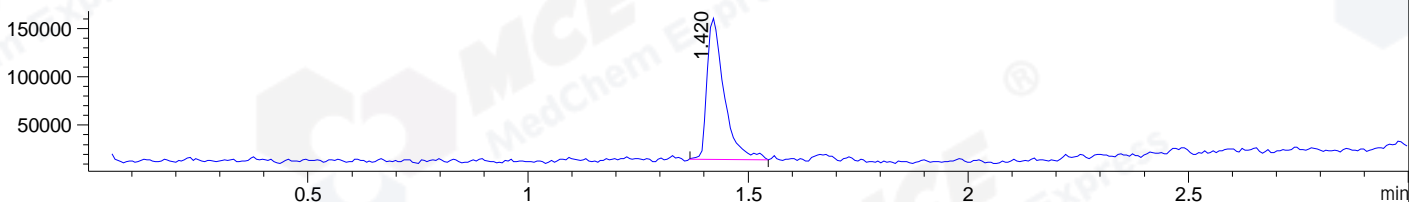
DAD1 B, Sig=214,4 Ref=off



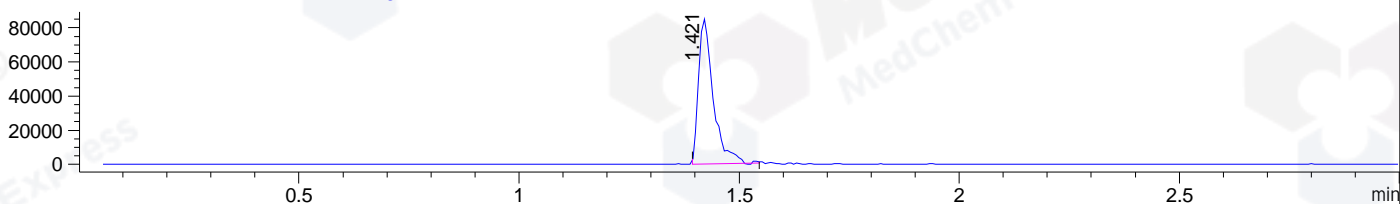
DAD1 C, Sig=254,4 Ref=off



MSD1 TIC, MS File ES-API, Pos, Scan, Frag: 70



Ion 389.4706, MSD1 389.4706, Target Mass 388.4706 +H Positive, EIC=389.17:390.17



Integration Results for DAD1 B, Sig=214,4 Ref=off

RetTim	Width	Area	Height	Area%	MS (+)
1.40	0.02	1096.89	748.06	98.48	389
1.51	0.02	7.60	5.43	0.68	130
1.64	0.02	7.89	6.77	0.71	130
1.65	0.01	1.43	2.68	0.13	130

Integration Results for DAD1 C, Sig=254,4 Ref=off

RetTim	Width	Area	Height	Area%	MS (+)
1.40	0.02	97.37	68.88	97.20	389
1.46	0.01	0.89	1.06	0.89	389
1.48	0.01	0.58	0.75	0.58	130
1.51	0.02	0.59	0.45	0.59	130
1.64	0.02	0.74	0.61	0.74	130

Integration Results for MSD1 TIC, MS File

RetTim	Width	Area	Height	Area%	MS (+)
--------	-------	------	--------	-------	--------

1.42 0.04 400897.94 146506.63 100.00 389

Ret. Time: 1.42

<<<< POSITIVE SPECTRA >>>>

ES-API Positive

