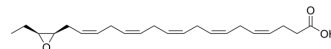


## 19(R),20(S)-EDP

Cat. No.:	HY-157690A
CAS No.:	2242542-60-3
Molecular Formula:	C <sub>22</sub> H <sub>32</sub> O <sub>3</sub>
Molecular Weight:	344.49
Target:	Others
Pathway:	Others
Storage:	Please store the product under the recommended conditions in the Certificate of Analysis.



### BIOLOGICAL ACTIVITY

Description	19(R),20(S)-EDP (compound 19(S),20(R)-2a) is an oxylipin and a metabolite of docosahexaenoic acid (HY-B2167) <sup>[1]</sup> .
-------------	---

### REFERENCES

[1]. Cinelli MA, et al. Enzymatic synthesis and chemical inversion provide both enantiomers of bioactive epoxydocosapentaenoic acids. *J Lipid Res.* 2018;59(11):2237-2252.

**Caution: Product has not been fully validated for medical applications. For research use only.**

Tel: 609-228-6898

Fax: 609-228-5909

E-mail: tech@MedChemExpress.com

Address: 1 Deer Park Dr, Suite Q, Monmouth Junction, NJ 08852, USA