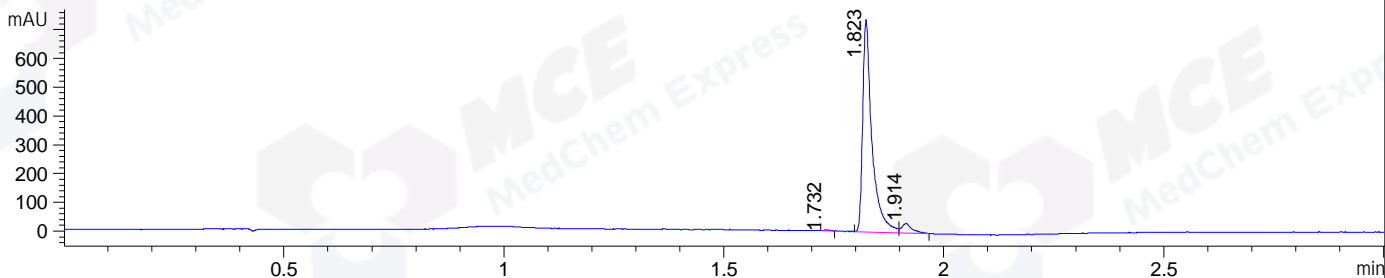
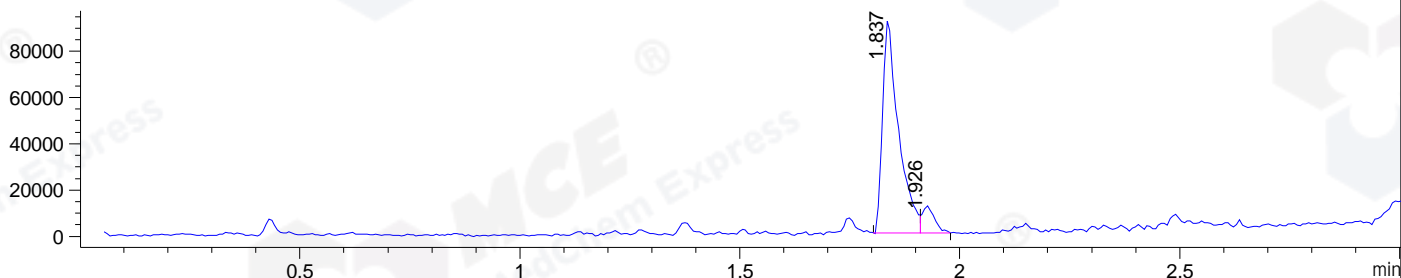


File ..DATA\2019\20191228\796\CPK2019-D26-12462-.D Tgt Mass (CHM):  
 Injection Date : 28 Dec 19 12:56 pm +0800 Seq. Line : 54  
 Sample Name : CPK2019-D26-12462 Location : P1-B-09  
 Acq. Operator : ZJ\_1432 Inj : 1  
 Spec. Reported : MS Integration Inj Volume : 0.4 ul  
 Acq. Method : D:\Chem32\1\data\2019\20191228\796\1-POS-3MIN.M  
 Analysis Method : D:\CHEM32\1\DATA\2019\20191228\796\1-POS-3MIN.M  
 Catalog No : HY-15770 Batch# 12462  
 Method Info : Mobile Phase: A: water(0.01%TFA) B:ACN(0.01%TFA)  
 Gradient: 5% to 95%B within 1.3 min  
 Flow Rate :1.8ml/min  
 Column :SunFire C18, 4.6\*50mm,3.5um A-RP-433  
 Oven Temperature : 45

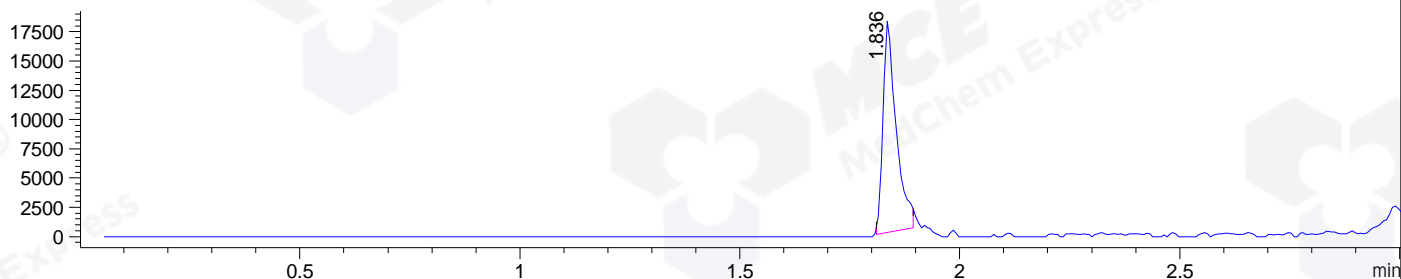
DAD1 B, Sig=214,4 Ref=off



MSD1 TIC, MS File ES-API, Pos, Scan, Frag: 70



Ion 474, MSD1 474, Target Mass 473 +H Positive, EIC=473.7:474.7



Integration Results for DAD1 B, Sig=214,4 Ref=off

RetTim	Width	Area	Height	Area%	MS (+)
1.73	0.02	3.02	2.69	0.27	279
1.82	0.02	1078.96	736.68	95.14	474
1.91	0.03	52.11	32.74	4.59	ND

Integration Results for MSD1 TIC, MS File

RetTim	Width	Area	Height	Area%	MS (+)
1.84	0.04	234409.13	92880.28	90.95	474
1.93	0.03	23325.81	11816.82	9.05	ND

Ret. Time: 1.84

<<<< POSITIVE SPECTRA >>>>

ES-API Positive

