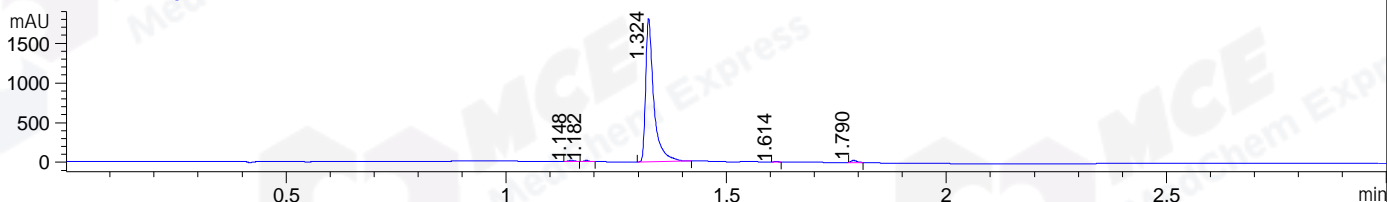
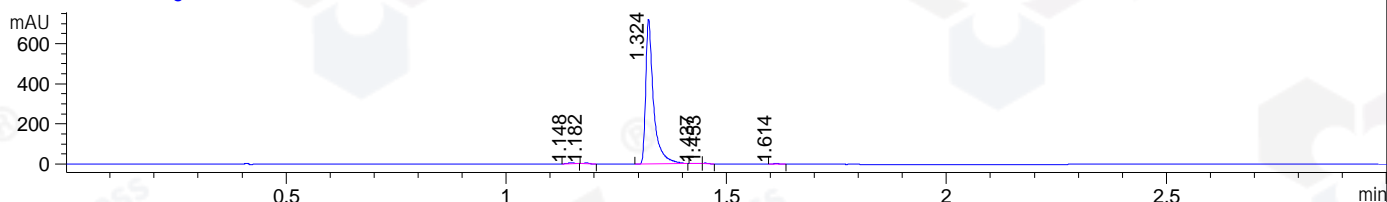


File ..DATA\2021\20210203\1264\CPK2021-202-30168.D Tgt Mass (CHM):
 Injection Date : 3 Feb 21 1:40 pm +0800 Seq. Line : 61
 Sample Name : CPK2021-202-30168 Location : P1-B-07
 Acq. Operator : yrz_1364 Inj : 1
 Spec. Reported : MS Integration Inj Volume : 1 ul
 Acq. Method : D:\Chem32\1\data\2021\20210203\1264\1-POS-3MIN.M
 Analysis Method : D:\CHEM32\1\DATA\2021\20210203\1264\1-POS-3MIN.M
 CAS NO. : 1456858-58-4
 Method Info : Mobile Phase: A: water(0.01%TFA) B:ACN(0.01%TFA)
 Gradient: 5% to 95%B within 1.3 min
 Flow Rate :1.8ml/min
 Column :SunFire C18, 4.6*50mm,3.5um A-RP-698

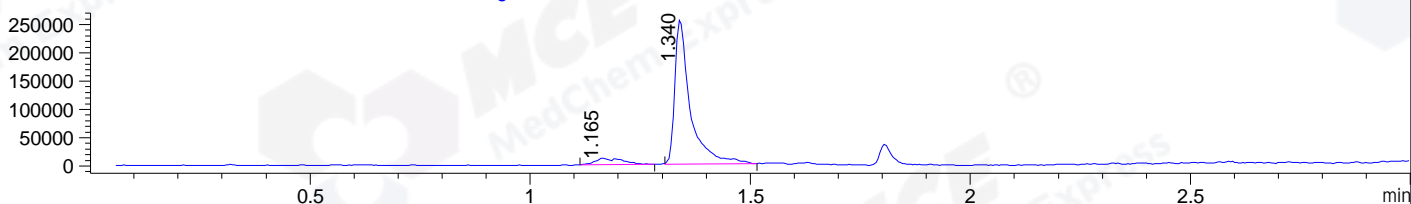
DAD1 B, Sig=214,4 Ref=off



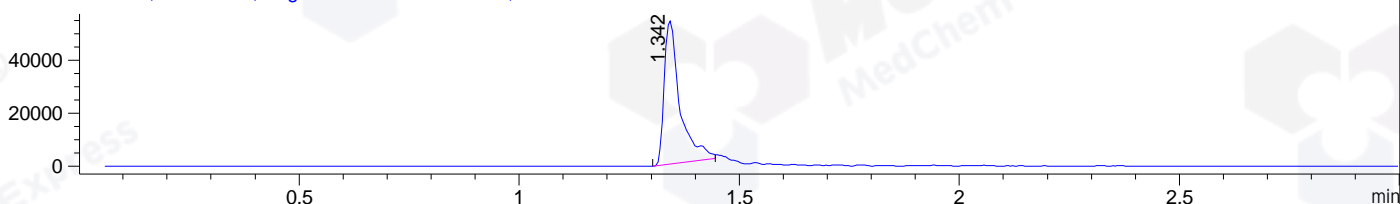
DAD1 C, Sig=254,4 Ref=off



MSD1 TIC, MS File ES-API, Pos, Scan, Frag: 70



Ion 568, MSD1 568, Target Mass 567 +H Positive, EIC=567.7:568.7



Integration Results for DAD1 B, Sig=214,4 Ref=off

RetTim	Width	Area	Height	Area%	MS (+)
1.15	0.01	10.90	12.75	0.46	421
1.18	0.01	8.46	12.39	0.36	421
1.32	0.02	2316.77	1806.40	98.02	285
1.61	0.01	2.92	4.33	0.12	ND
1.79	0.02	24.55	26.04	1.04	269

Integration Results for DAD1 C, Sig=254,4 Ref=off

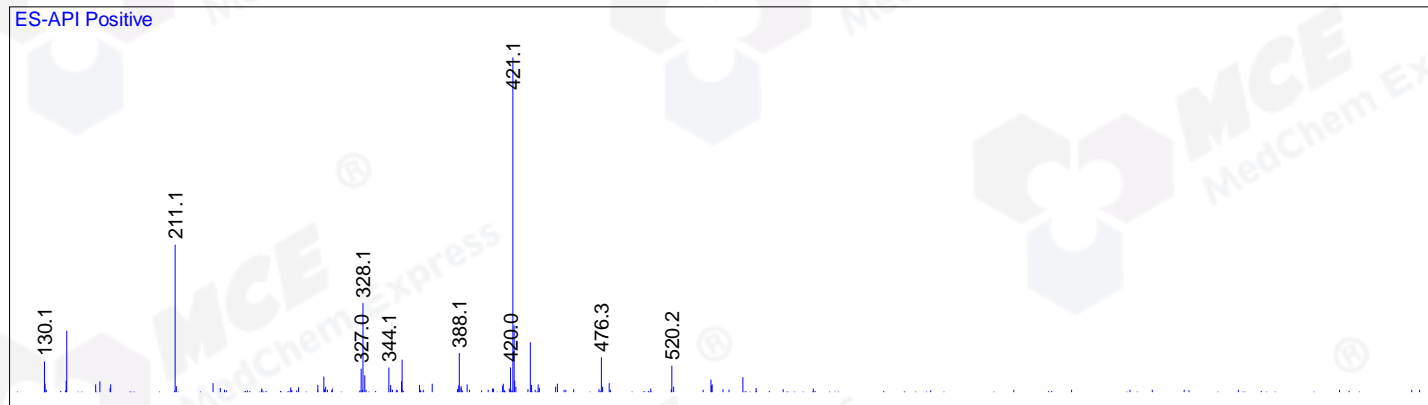
RetTim	Width	Area	Height	Area%	MS (+)
1.15	0.01	4.82	5.67	0.53	421
1.18	0.01	3.34	5.20	0.37	421
1.32	0.02	888.85	722.60	98.39	285
1.44	0.02	2.16	1.93	0.24	568
1.45	0.01	2.26	2.96	0.25	568
1.61	0.01	1.95	2.43	0.22	ND

Integration Results for MSD1 TIC, MS File

1.17	0.05	51936.12	12341.56	7.71	421
1.34	0.04	621252.94	257113.75	92.29	285

RetTim	Width	Area	Height	Area%	MS (+)
--------	-------	------	--------	-------	--------

Ret. Time: 1.17 <<<< POSITIVE SPECTRA >>>>



Ret. Time: 1.34

