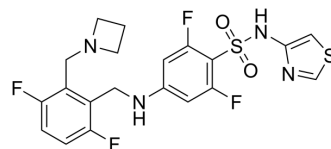


## XPC-5462

Cat. No.:	HY-157786
CAS No.:	2230145-14-7
Molecular Formula:	C <sub>20</sub> H <sub>18</sub> F <sub>4</sub> N <sub>4</sub> O <sub>2</sub> S <sub>2</sub>
Molecular Weight:	486.51
Target:	Sodium Channel
Pathway:	Membrane Transporter/Ion Channel
Storage:	Please store the product under the recommended conditions in the Certificate of Analysis.



## BIOLOGICAL ACTIVITY

Description	XPC-5462 is a Nav1.6 and Nav1.2 inhibitor with the IC <sub>50</sub> s of 10.9 nM and 10.3 nM, respectively. XPC-5462 suppresses epileptiform activity in an ex vivo brain slice seizure model <sup>[1]</sup> .	
IC <sub>50</sub> & Target	Nav1.2 10.3 nM (IC <sub>50</sub> )	Nav1.6 10.9 nM (IC <sub>50</sub> )

## REFERENCES

[1]. Goodchild SJ, et al. Molecular Pharmacology of Selective Nav1.6 and Dual Nav1.6/Nav1.2 Channel Inhibitors that Suppress Excitatory Neuronal Activity Ex Vivo. ACS Chem Neurosci. 2024 Feb 15.

**Caution: Product has not been fully validated for medical applications. For research use only.**

Tel: 609-228-6898

Fax: 609-228-5909

E-mail: tech@MedChemExpress.com

Address: 1 Deer Park Dr, Suite Q, Monmouth Junction, NJ 08852, USA