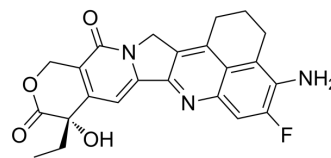


Exatecan analogue 1

| | |
|--------------------|---|
| Cat. No.: | HY-157795 |
| CAS No.: | 2671770-58-2 |
| Molecular Formula: | C ₂₃ H ₂₀ FN ₃ O ₄ |
| Molecular Weight: | 421.42 |
| Target: | ADC Cytotoxin; Topoisomerase |
| Pathway: | Antibody-drug Conjugate/ADC Related; Cell Cycle/DNA Damage |
| Storage: | Please store the product under the recommended conditions in the Certificate of Analysis. |



BIOLOGICAL ACTIVITY

| | |
|---------------------------|---|
| Description | Exatecan analogue 1 (lcp-3) is a Exatecan (HY-13631) analogue. Exatecan analogue 1 can be used in the synthesis of antibody-drug conjugates (ADCs) ^[1] |
| IC ₅₀ & Target | Camptothecins |

REFERENCES

[1]. Robert Yongxin Zhao, et al. Bcma monoclonal antibody and the antibody-drug conjugate. WO2023078021 A1. 2023-05-11.

Caution: Product has not been fully validated for medical applications. For research use only.

Tel: 609-228-6898

Fax: 609-228-5909

E-mail: tech@MedChemExpress.com

Address: 1 Deer Park Dr, Suite Q, Monmouth Junction, NJ 08852, USA