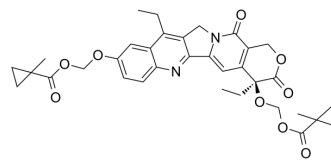


## SN-38-CM2

Cat. No.:	HY-157797
CAS No.:	2376127-86-3
Molecular Formula:	C <sub>34</sub> H <sub>36</sub> N <sub>2</sub> O <sub>9</sub>
Molecular Weight:	616.66
Target:	Others
Pathway:	Others
Storage:	Please store the product under the recommended conditions in the Certificate of Analysis.



## BIOLOGICAL ACTIVITY

### Description

SN-38-CM2 is a split esterase, and shows >95% conversion to SN-38 within 5 min in vitro. SN-38-CM2 induces protein-protein interactions (PPI)-dependent esterase to mediate cell death in MDA-MB-231 cells<sup>[1]</sup>.

## REFERENCES

[1]. Jones KA, et al. Development of a Split Esterase for Protein-Protein Interaction-Dependent Small-Molecule Activation. ACS Cent Sci. 2019 Nov 27;5(11):1768-1776.

**Caution: Product has not been fully validated for medical applications. For research use only.**

Tel: 609-228-6898

Fax: 609-228-5909

E-mail: tech@MedChemExpress.com

Address: 1 Deer Park Dr, Suite Q, Monmouth Junction, NJ 08852, USA