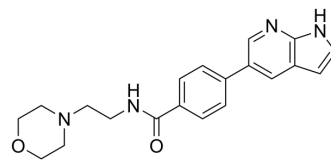


PD-1/PD-L1-IN-40

Cat. No.:	HY-157811
Molecular Formula:	C ₂₀ H ₂₂ N ₄ O ₂
Molecular Weight:	350.41
Target:	PD-1/PD-L1
Pathway:	Immunology/Inflammation
Storage:	Please store the product under the recommended conditions in the Certificate of Analysis.



BIOLOGICAL ACTIVITY

Description

PD-1/PD-L1-IN-40 (Compound EP16) is a PD-1/PD-L1 inhibitor. PD-1/PD-L1-IN-40 inhibits the generation of exosomal PD-L1 with IC₅₀ = 0.108 μM. PD-1/PD-L1-IN-40 can serve as a leading compound for exosomal PD-L1 abrogation. PD-1/PD-L1-IN-40 can be used for the research of cancer^[1].

REFERENCES

[1]. Sun JG, et al. Identification of the exosomal PD-L1 inhibitor to promote the PD-1 targeting therapy of gastric cancer. *Eur J Med Chem.* 2024 Feb 7;268:116182.

Caution: Product has not been fully validated for medical applications. For research use only.

Tel: 609-228-6898

Fax: 609-228-5909

E-mail: tech@MedChemExpress.com

Address: 1 Deer Park Dr, Suite Q, Monmouth Junction, NJ 08852, USA