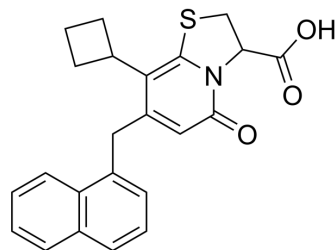


Mtb-IN-6

Cat. No.:	HY-157870
Molecular Formula:	C ₂₃ H ₂₁ NO ₃ S
Molecular Weight:	391.48
Target:	Bacterial
Pathway:	Anti-infection
Storage:	Please store the product under the recommended conditions in the Certificate of Analysis.



BIOLOGICAL ACTIVITY

Description

Mtb-IN-6 (Compound C10) is a Mycobacterium tuberculosis (*Mtb*) respiration inhibitor. Mtb-IN-6 can enhance the bactericidal activity of isoniazid (INH, HY-B0329). Mtb-IN-6 inhibits WT *Mtb* with an IC₅₀ of 25 μM^[1].

REFERENCES

[1]. Harrison GA, et al. Inducing vulnerability to InhA inhibition restores isoniazid susceptibility in drug-resistant Mycobacterium tuberculosis. *mBio*. 2024 Jan 31:e0296823.

Caution: Product has not been fully validated for medical applications. For research use only.

Tel: 609-228-6898

Fax: 609-228-5909

E-mail: tech@MedChemExpress.com

Address: 1 Deer Park Dr, Suite Q, Monmouth Junction, NJ 08852, USA