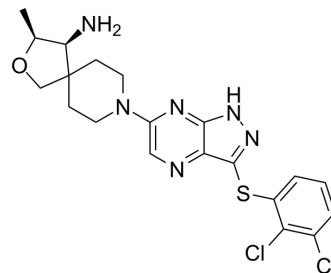


SHP2-IN-26

Cat. No.:	HY-157888
Molecular Formula:	C ₂₀ H ₂₂ Cl ₂ N ₆ OS
Molecular Weight:	465.4
Target:	SHP2; Phosphatase
Pathway:	Protein Tyrosine Kinase/RTK; Metabolic Enzyme/Protease
Storage:	Please store the product under the recommended conditions in the Certificate of Analysis.



BIOLOGICAL ACTIVITY

Description

SHP2-IN-26 (Compound 4b) is a highly selective SHP2 allosteric inhibitor with a IC_{50} value of 3.2 nM. SHP2-IN-26 inhibits the phosphorylation of ERK and AKT in NCI-H358 cells. SHP2-IN-26 has antitumor activity^[1].

REFERENCES

[1]. Xu W Q, et al. Discovery of 1H-pyrazolo [3, 4-b] pyrazine derivatives as selective allosteric inhibitor of protein tyrosine phosphatase SHP2 for the treatment of KRASG12C-mutant non-small cell lung cancer. Journal of Biomolecular Structure and Dynamics, 2024: 1-9.

Caution: Product has not been fully validated for medical applications. For research use only.

Tel: 609-228-6898

Fax: 609-228-5909

E-mail: tech@MedChemExpress.com

Address: 1 Deer Park Dr, Suite Q, Monmouth Junction, NJ 08852, USA