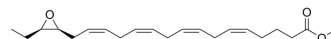


(±)17(18)-EpETE methyl ester

| | |
|--------------------|---|
| Cat. No.: | HY-157910 |
| CAS No.: | 141339-46-0 |
| Molecular Formula: | C ₂₁ H ₃₂ O ₃ |
| Molecular Weight: | 332.48 |
| Target: | Others |
| Pathway: | Others |
| Storage: | Please store the product under the recommended conditions in the Certificate of Analysis. |



BIOLOGICAL ACTIVITY

| | |
|-------------|--|
| Description | (±)17(18)-EpETE methyl ester is an analog of the eicosapentaenoic acid (EPA) metabolite (±)17(18)-EpETE ^[1] . |
|-------------|--|

REFERENCES

[1]. Oliw EH. 17R(18S)epoxyeicosatetraenoic acid, a cytochrome P-450 metabolite of 20:5n-3 in monkey seminal vesicles, is metabolized to novel prostaglandins. *Biochem Biophys Res Commun.* 1991;178(3):1444-1450.

Caution: Product has not been fully validated for medical applications. For research use only.

Tel: 609-228-6898

Fax: 609-228-5909

E-mail: tech@MedChemExpress.com

Address: 1 Deer Park Dr, Suite Q, Monmouth Junction, NJ 08852, USA