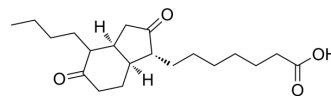


Bicyclo-PGE1

| | |
|--------------------|---|
| Cat. No.: | HY-157925 |
| CAS No.: | 1283861-32-4 |
| Molecular Formula: | C ₂₀ H ₃₂ O ₄ |
| Molecular Weight: | 336.47 |
| Target: | Others |
| Pathway: | Others |
| Storage: | Please store the product under the recommended conditions in the Certificate of Analysis. |



BIOLOGICAL ACTIVITY

Description

Bicyclo-PGE1 (Bicyclo Prostaglandin E1) is a stable, base-catalyzed transformation product of the PGE1 metabolite 13,14-dihydro-15-keto PGE1. Bicyclo-PGE1 can be used to estimate the biosynthesis and metabolism of PGE1 in vivo^[1].

REFERENCES

[1]. Peskar BA, et al., On the metabolism of prostaglandin E1 administered intravenously to human volunteers. J Physiol Pharmacol. 1991 Sep;42(3):327-31.

Caution: Product has not been fully validated for medical applications. For research use only.

Tel: 609-228-6898

Fax: 609-228-5909

E-mail: tech@MedChemExpress.com

Address: 1 Deer Park Dr, Suite Q, Monmouth Junction, NJ 08852, USA