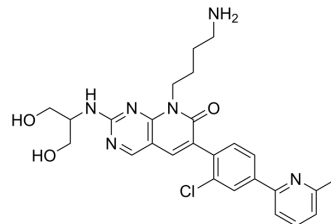


## MR24

Cat. No.:	HY-157932
Molecular Formula:	C <sub>26</sub> H <sub>29</sub> ClN <sub>6</sub> O <sub>3</sub>
Molecular Weight:	509
Target:	Hippo (MST)
Pathway:	Stem Cell/Wnt
Storage:	Please store the product under the recommended conditions in the Certificate of Analysis.



### BIOLOGICAL ACTIVITY

<b>Description</b>	MR24, a G-5555 (HY-19635) derivative, is a mammalian STE20-like (MST) kinase inhibitor. MR24 selectively target MST3/4, with EC <sub>50</sub> values of 57 and 583 nM, respectively <sup>[1]</sup> .								
<b>IC<sub>50</sub> &amp; Target</b>	IC <sub>50</sub> : 57 ± 44 nM (MST3), 583 ± 210 nM (MST4) <sup>[1]</sup>								
<b>In Vitro</b>	<p>MR24 causes a cell-cycle arrest in the G1 phase<sup>[1]</sup>.</p> <p>MR24 exhibits an excellent microsomal stability of more than 90% over a time of 1 h<sup>[1]</sup>.</p> <p>MCE has not independently confirmed the accuracy of these methods. They are for reference only.</p> <p>Cell Cycle Analysis<sup>[1]</sup></p> <table border="1"> <tr> <td>Cell Line:</td> <td>HCT116 cells</td> </tr> <tr> <td>Concentration:</td> <td>10 μM</td> </tr> <tr> <td>Incubation Time:</td> <td>24, 48, and 72 h</td> </tr> <tr> <td>Result:</td> <td>Increased the fraction of cells in the G1 phase.</td> </tr> </table>	Cell Line:	HCT116 cells	Concentration:	10 μM	Incubation Time:	24, 48, and 72 h	Result:	Increased the fraction of cells in the G1 phase.
Cell Line:	HCT116 cells								
Concentration:	10 μM								
Incubation Time:	24, 48, and 72 h								
Result:	Increased the fraction of cells in the G1 phase.								

### REFERENCES

[1]. Marcel Rak, et al. Development of Selective Pyrido[2,3-d]pyrimidin-7(8H)-one-Based Mammalian STE20-Like (MST3/4) Kinase Inhibitors. J. Med. Chem. 2024.

**Caution: Product has not been fully validated for medical applications. For research use only.**

Tel: 609-228-6898

Fax: 609-228-5909

E-mail: tech@MedChemExpress.com

Address: 1 Deer Park Dr, Suite Q, Monmouth Junction, NJ 08852, USA