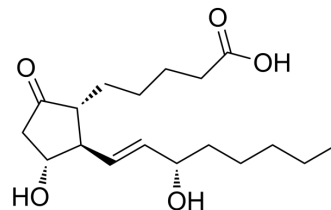


Dinorprostaglandin E1

Cat. No.:	HY-157976
CAS No.:	7046-40-4
Molecular Formula:	C ₁₈ H ₃₀ O ₅
Molecular Weight:	326.43
Target:	Endogenous Metabolite; Prostaglandin Receptor
Pathway:	Metabolic Enzyme/Protease; GPCR/G Protein
Storage:	Please store the product under the recommended conditions in the Certificate of Analysis.



BIOLOGICAL ACTIVITY

Description

Dinorprostaglandin E1 (dinor-PGE1) is the hepatocyte metabolite of prostaglandin E1 and prostaglandin E. Prostaglandin E1 and prostaglandin E inhibit glucagon, epinephrine, isoproterenol (beta-adrenergic agonist), or epinephrine-stimulated glycogenolysis when co-treated with Isoproterenol (HY-B0468)^[1].

REFERENCES

[1]. Okumura T, Sago T, Saito K. Effect of prostaglandins and their analogues on hormone-stimulated glycogenolysis in primary cultures of rat hepatocytes[J]. *Biochimica et Biophysica Acta (BBA)-Lipids and Lipid Metabolism*, 1988, 958(2): 179-187.

Caution: Product has not been fully validated for medical applications. For research use only.

Tel: 609-228-6898

Fax: 609-228-5909

E-mail: tech@MedChemExpress.com

Address: 1 Deer Park Dr, Suite Q, Monmouth Junction, NJ 08852, USA