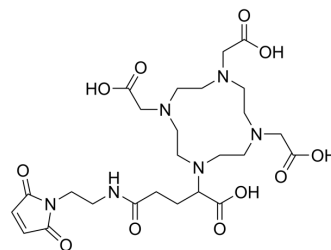


DOTA-GA-maleimide

Cat. No.:	HY-157977
CAS No.:	1800229-46-2
Molecular Formula:	C ₂₅ H ₃₈ N ₆ O ₁₁
Molecular Weight:	598.6
Target:	Biochemical Assay Reagents
Pathway:	Others
Storage:	Please store the product under the recommended conditions in the Certificate of Analysis.



SOLVENT & SOLUBILITY

In Vitro

H₂O : 250 mg/mL (417.64 mM; Need ultrasonic)

Preparing Stock Solutions	Solvent Concentration	Mass		
		1 mg	5 mg	10 mg
	1 mM	1.6706 mL	8.3528 mL	16.7056 mL
	5 mM	0.3341 mL	1.6706 mL	3.3411 mL
	10 mM	0.1671 mL	0.8353 mL	1.6706 mL

Please refer to the solubility information to select the appropriate solvent.

BIOLOGICAL ACTIVITY

Description

DOTA-GA-maleimide is a macrocyclic chelator, which forms stable complex with metals. DOTA-GA-maleimide is utilized as radiolabelled imaging agent^[1].

REFERENCES

[1]. Xavier ME, et al., Pre-labelling versus direct labelling of anthrax proteins for imaging of matrix metalloproteinases activity using DOTA-GA. Nucl Med Biol. 2019 May-Jun;72-73:49-54.

Caution: Product has not been fully validated for medical applications. For research use only.

Tel: 609-228-6898

Fax: 609-228-5909

E-mail: tech@MedChemExpress.com

Address: 1 Deer Park Dr, Suite Q, Monmouth Junction, NJ 08852, USA