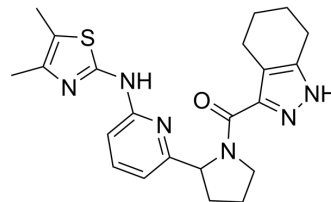


## MHC00188

Cat. No.:	HY-158001
CAS No.:	1380881-85-5
Molecular Formula:	C <sub>22</sub> H <sub>26</sub> N <sub>6</sub> O <sub>5</sub>
Molecular Weight:	422.55
Target:	Phosphodiesterase (PDE)
Pathway:	Metabolic Enzyme/Protease
Storage:	Please store the product under the recommended conditions in the Certificate of Analysis.



### BIOLOGICAL ACTIVITY

Description	MHC00188 is an allosteric inhibitor for Autotaxin (ATX) with an IC <sub>50</sub> of 2.53 μM <sup>[1]</sup> .
IC <sub>50</sub> & Target	Autotaxin

### REFERENCES

[1]. Stylianaki EA, et al., Identification of two novel chemical classes of Autotaxin (ATX) inhibitors using Enalos Asclepios KNIME nodes. *Bioorg Med Chem Lett*. 2024 Mar 5;103:129690.

**Caution: Product has not been fully validated for medical applications. For research use only.**

Tel: 609-228-6898

Fax: 609-228-5909

E-mail: tech@MedChemExpress.com

Address: 1 Deer Park Dr, Suite Q, Monmouth Junction, NJ 08852, USA