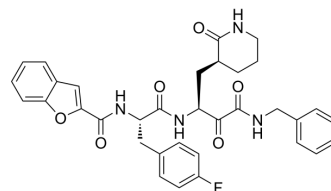


CTSL/CAPN1-IN-1

Cat. No.:	HY-158022
Molecular Formula:	C ₃₄ H ₃₃ FN ₄ O ₆
Molecular Weight:	612.65
Target:	Cathepsin
Pathway:	Metabolic Enzyme/Protease
Storage:	Please store the product under the recommended conditions in the Certificate of Analysis.



BIOLOGICAL ACTIVITY

Description

CTSL/CAPN1-IN-1 (compound 14a) is an oral active CTSL and CAPN1 inhibitor with the IC₅₀ values of 3.34 nM and 375.1 nM for CTSL and CAPN1, respectively. CTSL/CAPN1-IN-1 shows anticoronaviral activity and anti-inflammatory effect^[1].

REFERENCES

[1]. Xie X, et al. Structure-based design of pan-coronavirus inhibitors targeting host cathepsin L and calpain-1. *Signal Transduct Target Ther.* 2024;9(1):54. Published 2024 Mar 6.

Caution: Product has not been fully validated for medical applications. For research use only.

Tel: 609-228-6898

Fax: 609-228-5909

E-mail: tech@MedChemExpress.com

Address: 1 Deer Park Dr, Suite Q, Monmouth Junction, NJ 08852, USA