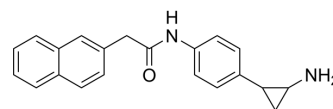


## MC2646

Cat. No.:	HY-158060
Molecular Formula:	C <sub>21</sub> H <sub>20</sub> N <sub>2</sub> O
Molecular Weight:	316.4
Target:	Autophagy; Parasite
Pathway:	Autophagy; Anti-infection
Storage:	Please store the product under the recommended conditions in the Certificate of Analysis.



### BIOLOGICAL ACTIVITY

<b>Description</b>	MC2646 is a potent anti-parasite agent. MC2646 induces autophagic. MC2646 activates the AMPK/TFEB pathway <sup>[1]</sup> .								
<b>In Vitro</b>	<p>MC2646 (4 μM; 24 h) induces autophagic flux by increases the LC3-II:LC3-I ratio <sup>[1]</sup>.</p> <p>MC2646 (4 μM; 24 h) increases the expression of p-AMPK and increase in the nuclear:cytoplasmic TFEB localization<sup>[1]</sup>.</p> <p>MCE has not independently confirmed the accuracy of these methods. They are for reference only.</p> <p>Western Blot Analysis<sup>[1]</sup></p> <table border="1"> <tr> <td>Cell Line:</td> <td>TBL3, BL3 cells</td> </tr> <tr> <td>Concentration:</td> <td>4 μM</td> </tr> <tr> <td>Incubation Time:</td> <td>24 h</td> </tr> <tr> <td>Result:</td> <td>Increased the LC3-II:LC3-I ratio in infected TBL3 and uninfected BL3 cells,</td> </tr> </table>	Cell Line:	TBL3, BL3 cells	Concentration:	4 μM	Incubation Time:	24 h	Result:	Increased the LC3-II:LC3-I ratio in infected TBL3 and uninfected BL3 cells,
Cell Line:	TBL3, BL3 cells								
Concentration:	4 μM								
Incubation Time:	24 h								
Result:	Increased the LC3-II:LC3-I ratio in infected TBL3 and uninfected BL3 cells,								

### REFERENCES

[1]. Villares M, et al. Theileria parasites sequester host eIF5A to escape elimination by host-mediated autophagy. Nat Commun. 2024 Mar 12;15(1):2235.

**Caution: Product has not been fully validated for medical applications. For research use only.**

Tel: 609-228-6898

Fax: 609-228-5909

E-mail: tech@MedChemExpress.com

Address: 1 Deer Park Dr, Suite Q, Monmouth Junction, NJ 08852, USA