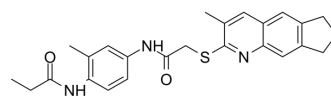


FKBP51-Hsp90-IN-2

| | |
|--------------------|---|
| Cat. No.: | HY-158131 |
| CAS No.: | 601511-07-3 |
| Molecular Formula: | C ₂₅ H ₂₇ N ₃ O ₂ S |
| Molecular Weight: | 433.57 |
| Target: | FKBP; HSP |
| Pathway: | Apoptosis; Autophagy; Immunology/Inflammation; Cell Cycle/DNA Damage; Metabolic Enzyme/Protease |
| Storage: | Please store the product under the recommended conditions in the Certificate of Analysis. |



BIOLOGICAL ACTIVITY

| | | | | | | | | | | | | | | | | | |
|-------------------------------------|---|------------|--------------|----------------|-------|------------------|-----------|---------|---|------------|--------------|----------------|--------------|------------------|------|---------|---|
| Description | FKBP51-Hsp90-IN-2 (Compound E08) is a selective FKBP51-Hsp90 protein-protein interaction inhibitor with IC ₅₀ values of 0.4 μM and 5 μM for FKBP51 and FKBP52, respectively. FKBP51-Hsp90-IN-2 also effectively stimulates cellular energy metabolism and neurite growth. FKBP51-Hsp90-IN-2 can be used in research on neurodegenerative diseases and cancer ^[1] . | | | | | | | | | | | | | | | | |
| IC₅₀ & Target | IC ₅₀ : 0.4 μM (FKBP51); 5 μM (FKBP52) ^[1] . | | | | | | | | | | | | | | | | |
| In Vitro | <p>FKBP51-Hsp90-IN-2 (3-30 μM; 48 h) inhibits Hsp90's association with FKBP51 in HEK293 cells^[1].</p> <p>FKBP51-Hsp90-IN-2 (10 μM; 1-4 h) increases cellular energy metabolism in HEK293 cells^[1].</p> <p>FKBP51-Hsp90-IN-2 stimulates neurite outgrowth in differentiated neuroblastoma SH-SY5Y cells^[1].</p> <p>MCE has not independently confirmed the accuracy of these methods. They are for reference only.</p> <p>Cell Viability Assay^[1]</p> <table border="1"> <tr> <td>Cell Line:</td> <td>HEK293 cells</td> </tr> <tr> <td>Concentration:</td> <td>10 μM</td> </tr> <tr> <td>Incubation Time:</td> <td>1, 2, 4 h</td> </tr> <tr> <td>Result:</td> <td>Increased cell viability measured by MTT assay by 10-25%.</td> </tr> </table> <p>Western Blot Analysis^[1]</p> <table border="1"> <tr> <td>Cell Line:</td> <td>HEK293 cells</td> </tr> <tr> <td>Concentration:</td> <td>3, 10, 30 μM</td> </tr> <tr> <td>Incubation Time:</td> <td>48 h</td> </tr> <tr> <td>Result:</td> <td>Inhibited FKBP51-Hsp90 protein-protein interaction.</td> </tr> </table> | Cell Line: | HEK293 cells | Concentration: | 10 μM | Incubation Time: | 1, 2, 4 h | Result: | Increased cell viability measured by MTT assay by 10-25%. | Cell Line: | HEK293 cells | Concentration: | 3, 10, 30 μM | Incubation Time: | 48 h | Result: | Inhibited FKBP51-Hsp90 protein-protein interaction. |
| Cell Line: | HEK293 cells | | | | | | | | | | | | | | | | |
| Concentration: | 10 μM | | | | | | | | | | | | | | | | |
| Incubation Time: | 1, 2, 4 h | | | | | | | | | | | | | | | | |
| Result: | Increased cell viability measured by MTT assay by 10-25%. | | | | | | | | | | | | | | | | |
| Cell Line: | HEK293 cells | | | | | | | | | | | | | | | | |
| Concentration: | 3, 10, 30 μM | | | | | | | | | | | | | | | | |
| Incubation Time: | 48 h | | | | | | | | | | | | | | | | |
| Result: | Inhibited FKBP51-Hsp90 protein-protein interaction. | | | | | | | | | | | | | | | | |

REFERENCES

Caution: Product has not been fully validated for medical applications. For research use only.

Tel: 609-228-6898

Fax: 609-228-5909

E-mail: tech@MedChemExpress.com

Address: 1 Deer Park Dr, Suite Q, Monmouth Junction, NJ 08852, USA