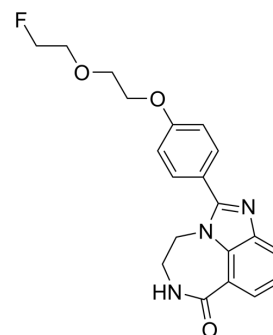


BIBD-300

Cat. No.:	HY-158251
CAS No.:	3030758-22-3
Molecular Formula:	C ₂₀ H ₂₀ FN ₃ O ₃
Molecular Weight:	369.39
Target:	Others
Pathway:	Others
Storage:	Please store the product under the recommended conditions in the Certificate of Analysis.



BIOLOGICAL ACTIVITY

Description

BIBD-300 is a PARP-1 imaging agent with high affinity for PARP-1. BIBD-300 can accurately localize C6 and U87MG tumors, which can be used for research in the diagnosis of breast cancer, prostate cancer, glioma, and liver cancer^[1].

REFERENCES

[1]. Zheng W, et al. Design, Synthesis, and Evaluation of [¹⁸F]BIBD-300 as a Positron Emission Tomography Tracer for Poly(ADP-Ribose) Polymerase-1. Mol Pharm. Published online April 12, 2024.

Caution: Product has not been fully validated for medical applications. For research use only.

Tel: 609-228-6898

Fax: 609-228-5909

E-mail: tech@MedChemExpress.com

Address: 1 Deer Park Dr, Suite Q, Monmouth Junction, NJ 08852, USA