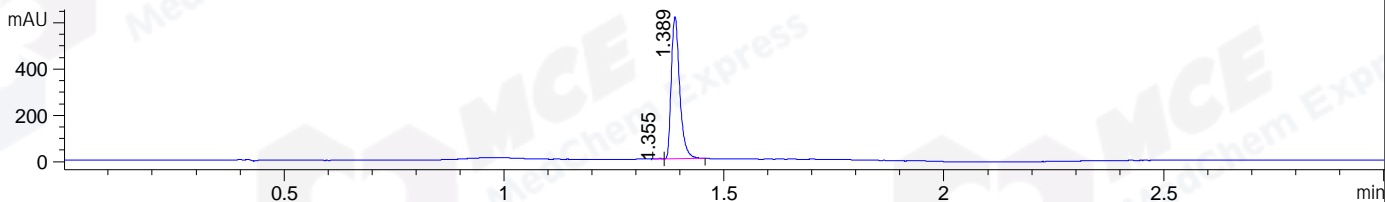
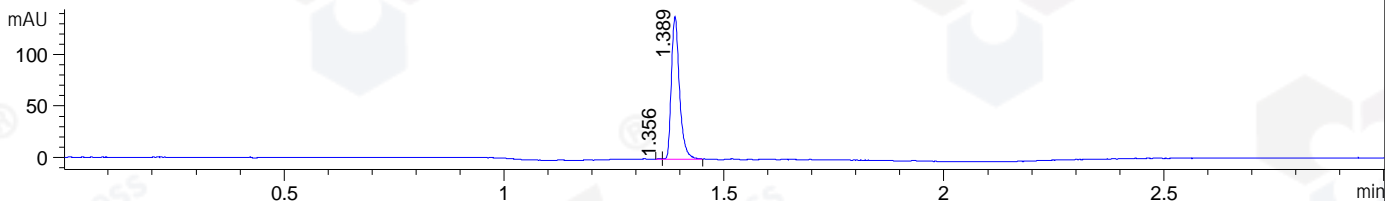


File ..DATA\2020\20200307\862\CPK2020-304-10829-.D Tgt Mass (CHM):
Injection Date : 7 Mar 20 12:54 pm +0800 Seq. Line : 52
Sample Name : CPK2020-304-10829 Location : P1-B-01
Acq. Operator : ZJ_1432 Inj : 1
Spec. Reported : MS Integration Inj Volume : 0.4 ul
Acq. Method : D:\Chem32\1\data\2020\20200307\862\1-POS-3MIN.M
Analysis Method : D:\CHEM32\1\DATA\2020\20200307\862\1-POS-3MIN.M
Catalog No : HY-15826 Batch#10829
Method Info : Mobile Phase: A: water(0.01%TFA) B:ACN(0.01%TFA)
Gradient: 5% to 95%B within 1.3 min
Flow Rate :1.8ml/min
Column :SunFire C18, 4.6*50mm,3.5um A-RP-433
Oven Temperature : 45□

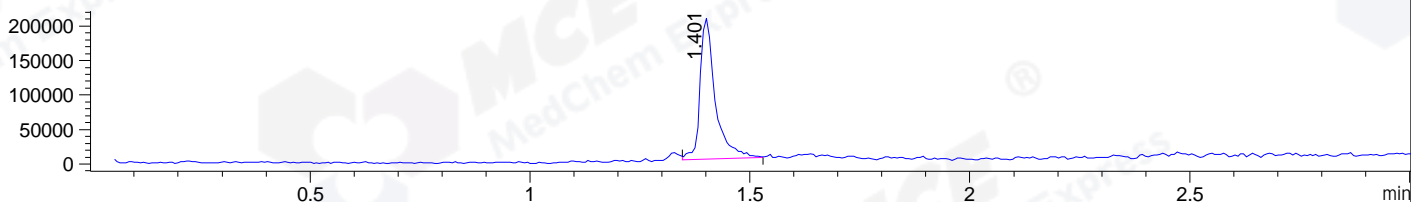
DAD1 B, Sig=214,4 Ref=off



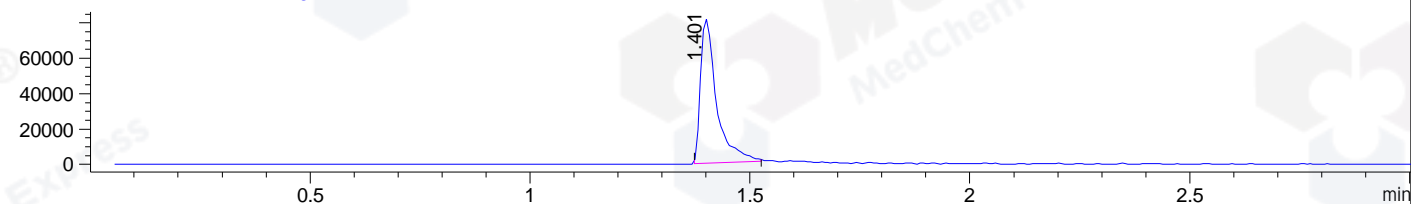
DAD1 C, Sig=254,4 Ref=off



MSD1 TIC, MS File ES-API, Pos, Scan, Frag: 70



Ion 509, MSD1 509, Target Mass 508 +H Positive, EIC=508.7:509.7



Integration Results for DAD1 B, Sig=214,4 Ref=off

RetTim	Width	Area	Height	Area%	MS (+)
1.35	0.02	2.15	2.17	0.26	414
1.39	0.02	816.21	615.23	99.74	509

Integration Results for DAD1 C, Sig=254,4 Ref=off

RetTim	Width	Area	Height	Area%	MS (+)
1.36	0.01	0.29	0.45	0.17	475
1.39	0.02	177.38	139.10	99.83	509

Integration Results for MSD1 TIC, MS File

RetTim	Width	Area	Height	Area%	MS (+)
1.40	0.04	489634.91	204352.16	100.00	509

Ret. Time: 1.40

<<<< POSITIVE SPECTRA >>>>

ES-API Positive

