

Chlorthalidone-d4

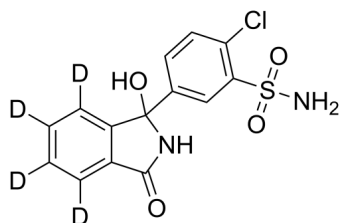
Cat. No.: HY-15833S
Batch No.: 410696
CAS No.: 1794941-44-8
Molecular Formula: C₁₄H₇D₄ClN₂O₄S

ANALYTICAL DATA

Theoretical: C(49.05%)、H(4.41%)、N(8.17%)

Result: C(48.25%)、H(3.48%)、N(7.90%)

Chemical Structure:



Caution: Product has not been fully validated for medical applications. For research use only.

Tel: 609-228-6898

Fax: 609-228-5909

E-mail: tech@MedChemExpress.com

Address: 1 Deer Park Dr, Suite Q, Monmouth Junction, NJ 08852, USA