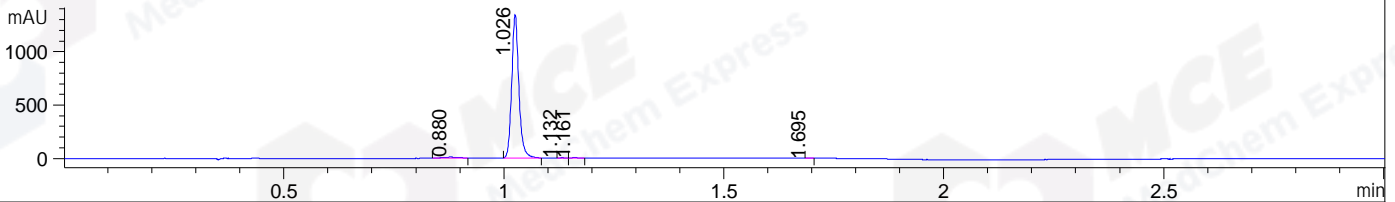
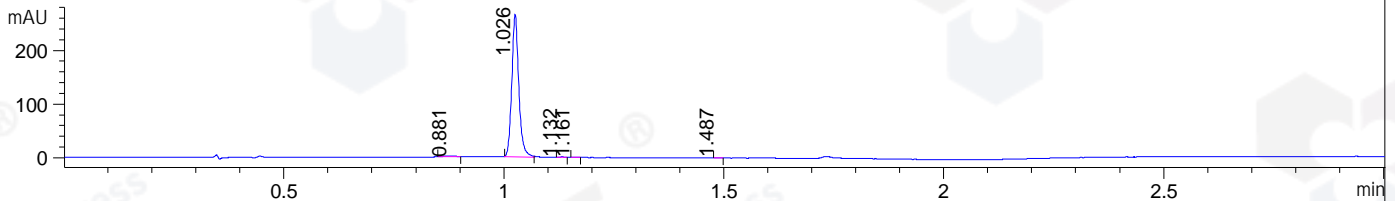


File ..\DATA\2019\20190529\576\CPK2019-528-11014.D Tgt Mass (CHM):
 Injection Date : 29 May 19 11:45 am +0800 Seq. Line : 32
 Sample Name : CPK2019-528-11014 Location : P2-E-09
 Acq. Operator : LQ_1052 Inj : 1
 Spec. Reported : MS Integration Inj Volume : 1 ul
 Acq. Method : D:\Chem32\1\data\2019\20190529\576\1-POS-3MIN.M
 Analysis Method : D:\CHEM32\1\DATA\2019\20190529\576\1-POS-3MIN.M
 Catalog No : HY-15839 Batch#11014
 Method Info : Mobile Phase: A: water(0.01%TFA) B:ACN(0.01%TFA)
 Gradient: 5% to 95%B within 1.3 min
 Flow Rate :1.8ml/min
 Column :SunFire C18, 4.6*50mm,3.5um A-RP-433
 Oven Temperature : 45□

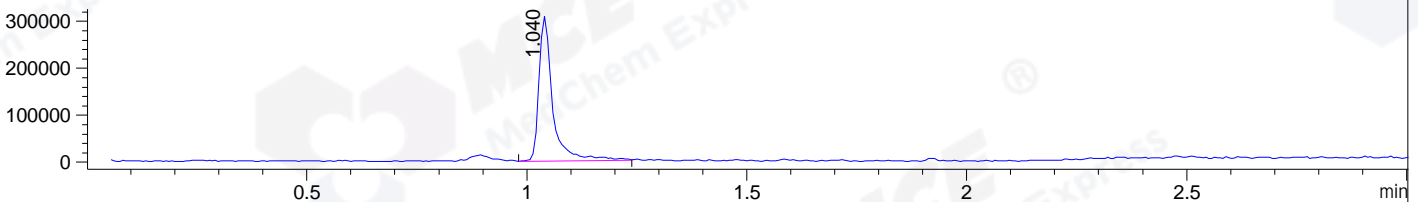
DAD1 B, Sig=214,4 Ref=off



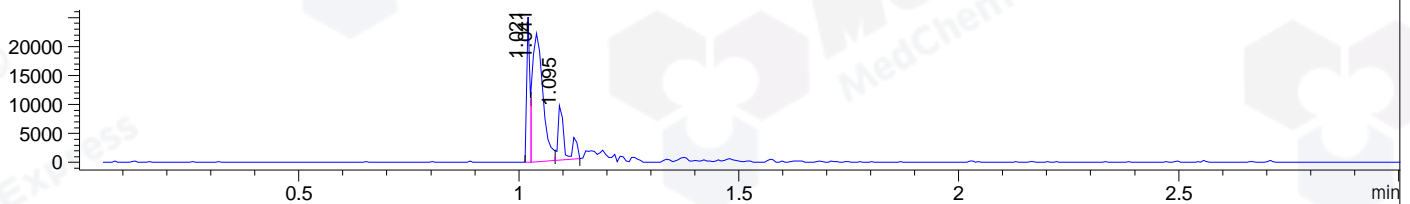
DAD1 C, Sig=254,4 Ref=off



MSD1 TIC, MS File ES-API, Pos, Scan, Frag: 70



Ion 339.3, MSD1 339.3, Target Mass 338.3 +H Positive, EIC=339:340



Integration Results for DAD1 B, Sig=214,4 Ref=off

| RetTim | Width | Area | Height | Area% | MS (+) |
|--------|-------|---------|---------|-------|--------|
| 0.88 | 0.03 | 21.14 | 8.73 | 1.37 | 294 |
| 1.03 | 0.02 | 1512.52 | 1343.53 | 98.07 | 340 |
| 1.13 | 0.01 | 2.97 | 3.90 | 0.19 | 338 |
| 1.16 | 0.01 | 5.23 | 5.89 | 0.34 | 136 |
| 1.70 | 0.01 | 0.37 | 0.56 | 0.02 | ND |

Integration Results for DAD1 C, Sig=254,4 Ref=off

| RetTim | Width | Area | Height | Area% | MS (+) |
|--------|-------|--------|--------|-------|--------|
| 0.88 | 0.03 | 2.70 | 1.37 | 0.91 | 294 |
| 1.03 | 0.02 | 293.75 | 266.14 | 98.57 | 340 |
| 1.13 | 0.01 | 0.64 | 0.88 | 0.22 | 338 |
| 1.16 | 0.01 | 0.57 | 0.76 | 0.19 | 136 |
| 1.49 | 0.01 | 0.33 | 0.44 | 0.11 | ND |

Integration Results for MSD1 TIC, MS File

| RetTim | Width | Area | Height | Area% | MS (+) |
|--------|-------|------|--------|-------|--------|
|--------|-------|------|--------|-------|--------|

1.04 0.03 674285.56 308766.63 100.00 340

Ret. Time: 1.04

<<<< POSITIVE SPECTRA >>>>

ES-API Positive

