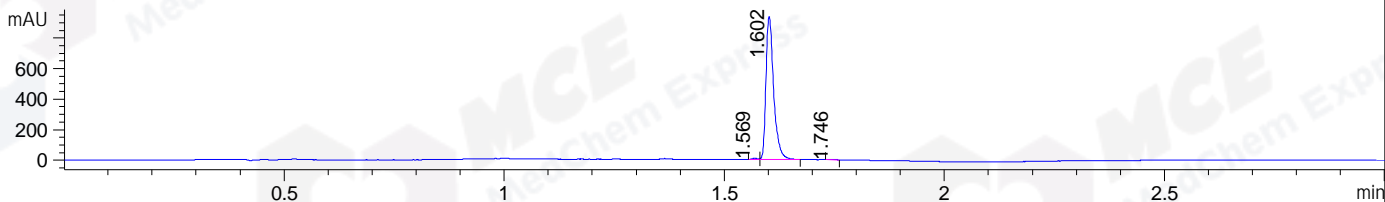
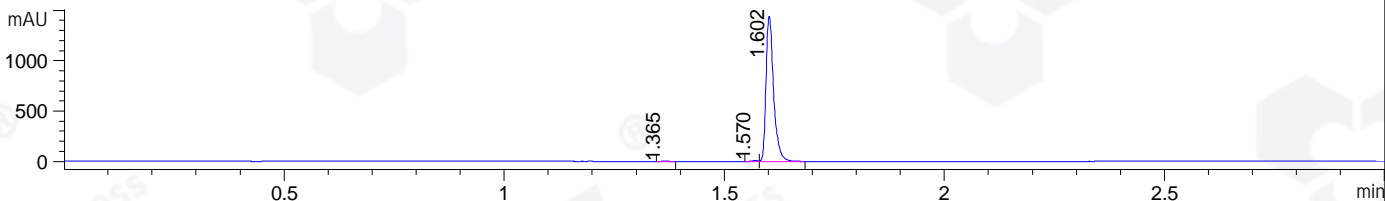


File ..\DATA\2019\20190822\705\CPK2019-819-11287.D Tgt Mass (CHM):
 Injection Date : 22 Aug 19 9:11 am +0800 Seq. Line : 5
 Sample Name : CPK2019-819-11287 Location : P1-A-07
 Acq. Operator : ZJ_1432 Inj : 1
 Spec. Reported : MS Integration Inj Volume : 1 ul
 Acq. Method : D:\Chem32\1\data\2019\20190822\705\1-POS-3MIN.M
 Analysis Method : D:\CHEM32\1\DATA\2019\20190822\705\1-POS-3MIN.M
 Catalog No : HY-15846 Batch#11287
 Method Info : Mobile Phase: A: water(0.01%TFA) B:ACN(0.01%TFA)
 Gradient: 5% to 95%B within 1.3 min
 Flow Rate :1.8ml/min
 Column :SunFire C18, 4.6*50mm,3.5um A-RP-433
 Oven Temperature : 45□

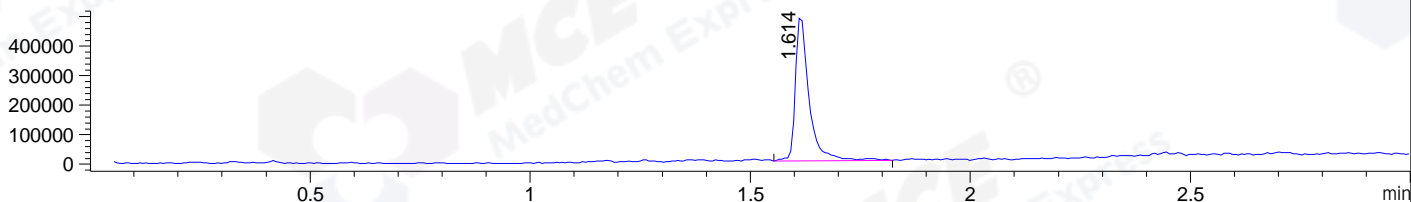
DAD1 B, Sig=214,4 Ref=off



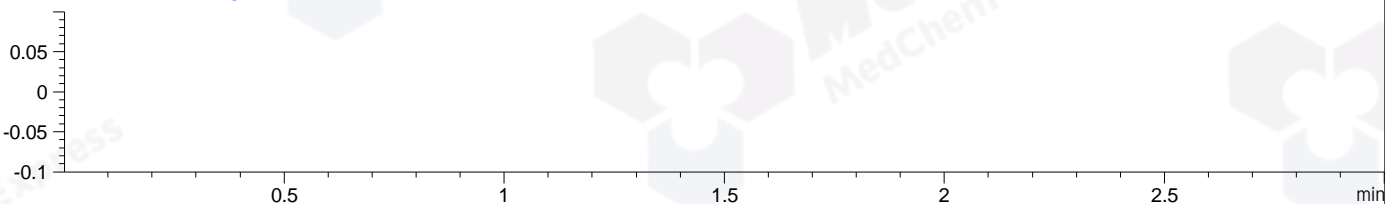
DAD1 C, Sig=254,4 Ref=off



MSD1 TIC, MS File ES-API, Pos, Scan, Frag: 70



Ion 1, MSD1 1, Target Mass 0 +H Positive, EIC=0.7:1.7



Integration Results for DAD1 B, Sig=214,4 Ref=off

RetTim	Width	Area	Height	Area%	MS (+)
1.57	0.02	6.02	6.64	0.52	408
1.60	0.02	1138.87	936.09	99.21	400
1.75	0.02	3.05	3.08	0.27	159

Integration Results for DAD1 C, Sig=254,4 Ref=off

RetTim	Width	Area	Height	Area%	MS (+)
1.37	0.02	2.32	2.37	0.13	ND
1.57	0.01	8.16	9.33	0.47	408
1.60	0.02	1725.78	1441.38	99.40	400

Integration Results for MSD1 TIC, MS File

RetTim	Width	Area	Height	Area%	MS (+)
1.61	0.03	1068836.75	500388.72	100.00	400

Ret. Time: 1.61

<<<< POSITIVE SPECTRA >>>>

ES-API Positive

