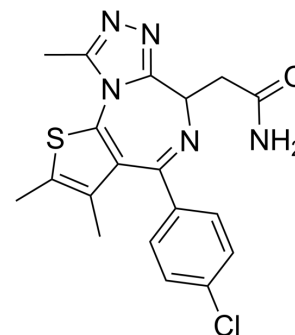


(Rac)-CPI-203

Cat. No.:	HY-15846A
CAS No.:	202591-23-9
Molecular Formula:	C ₁₉ H ₁₈ ClN ₅ OS
Molecular Weight:	399.9
Target:	Others
Pathway:	Others
Storage:	Please store the product under the recommended conditions in the Certificate of Analysis.



BIOLOGICAL ACTIVITY

Description

(Rac)-CPI-203 is a racemate of CPI-203 (HY-15846) (BET bromodomain inhibitor)^[1]

REFERENCES

[1]. Moros A, et al. Synergistic antitumor activity of lenalidomide with the BET bromodomain inhibitor CPI203 in bortezomib-resistant mantle cell lymphoma. *Leukemia*. 2014 Oct;28(10):2049-59

Caution: Product has not been fully validated for medical applications. For research use only.

Tel: 609-228-6898

Fax: 609-228-5909

E-mail: tech@MedChemExpress.com

Address: 1 Deer Park Dr, Suite Q, Monmouth Junction, NJ 08852, USA