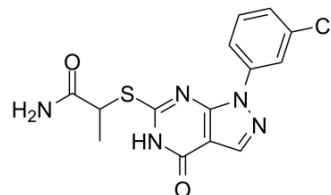


HS38

Cat. No.:	HY-15847
CAS No.:	1030203-81-6
Molecular Formula:	C ₁₄ H ₁₂ ClN ₅ O ₂ S
Molecular Weight:	349.8
Target:	Others
Pathway:	Others
Storage:	Please store the product under the recommended conditions in the COA.



BIOLOGICAL ACTIVITY

Description	HS38 is a potent, selective, and ATP-competitive inhibitor of DAPK1 and ZIPK (DAPK3) , with K _i s of 300 nM and 280 nM, respectively. HS38 can be used for the research of smooth muscle related disorders ^[1] .								
IC₅₀ & Target	Kd: 300 nM (DAPK1), 280 nM (ZIPK) ^[1]								
In Vitro	<p>HS38 significantly reduces relative RLC20 phosphorylation in both the basal and sphingosine 1-phosphate (S1P) activated states in human aortic SM cells^[1].</p> <p>HS38 reduces contractile forces generated by intact mouse aorta in aortic tissue^[1].</p> <p>HS38 reduces the contractile force, RLC20 phosphorylation, and MYPT1 phosphorylation in Ca²⁺-sensitized rabbit ileum^[1].</p> <p>Western Blot Analysis^[1]</p> <table border="1"> <tr> <td>Cell Line:</td> <td>CA-VSMCs</td> </tr> <tr> <td>Concentration:</td> <td>10 μM</td> </tr> <tr> <td>Incubation Time:</td> <td>40 minutes</td> </tr> <tr> <td>Result:</td> <td>Reduced relative RLC20 phosphorylation in both the basal and S1P activated states.</td> </tr> </table>	Cell Line:	CA-VSMCs	Concentration:	10 μM	Incubation Time:	40 minutes	Result:	Reduced relative RLC20 phosphorylation in both the basal and S1P activated states.
Cell Line:	CA-VSMCs								
Concentration:	10 μM								
Incubation Time:	40 minutes								
Result:	Reduced relative RLC20 phosphorylation in both the basal and S1P activated states.								

REFERENCES

[1]. David A Carlson, et al. Fluorescence Linked Enzyme Chemoproteomic Strategy for Discovery of a Potent and Selective DAPK1 and ZIPK Inhibitor. ACS Chem Biol. 2013 Dec 20; 8(12): 2715–2723.

Caution: Product has not been fully validated for medical applications. For research use only.

Tel: 609-228-6898

Fax: 609-228-5909

E-mail: tech@MedChemExpress.com

Address: 1 Deer Park Dr, Suite Q, Monmouth Junction, NJ 08852, USA