

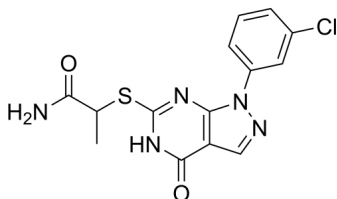
HS38

Cat. No.: HY-15847
Batch No.: 160068
CAS No.: 1030203-81-6
Molecular Formula: C₁₄H₁₂ClN₅O₂S

ANALYTICAL DATA

Theoretical: C(48.07%)、H(3.46%)、N(20.02%)
Result: C(48.16%)、H(3.43%)、N(19.76%)

Chemical Structure:



Caution: Product has not been fully validated for medical applications. For research use only.

Tel: 609-228-6898

Fax: 609-228-5909

E-mail: tech@MedChemExpress.com

Address: 1 Deer Park Dr, Suite Q, Monmouth Junction, NJ 08852, USA