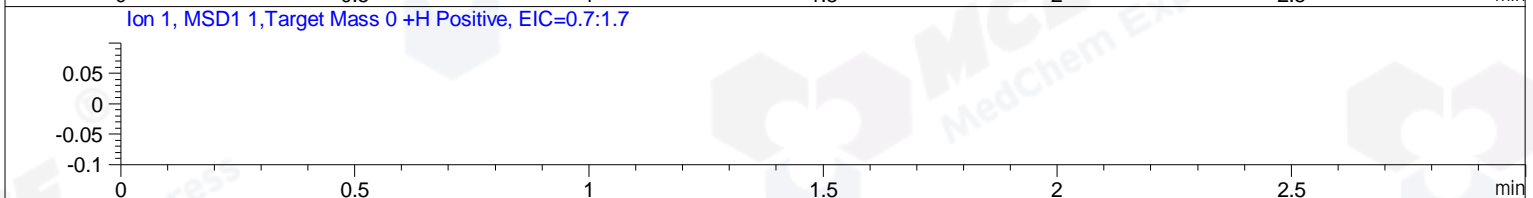
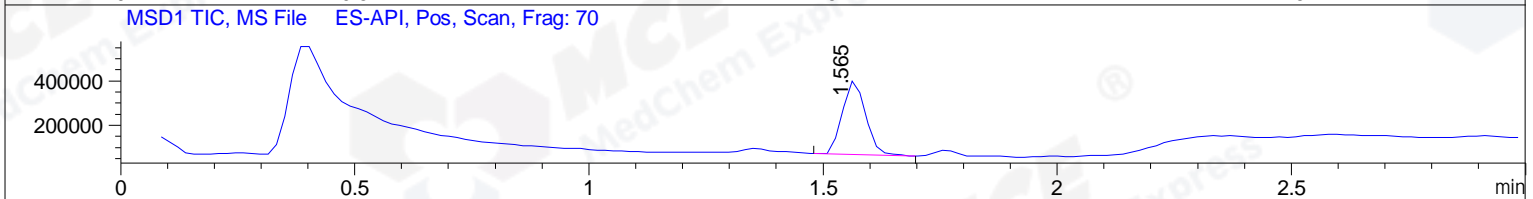
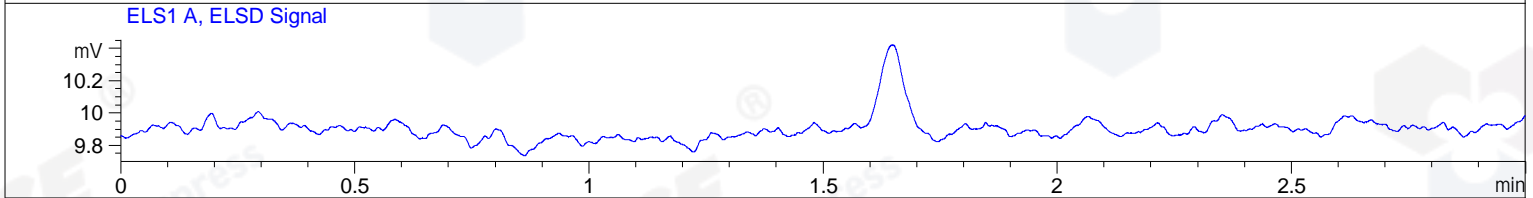
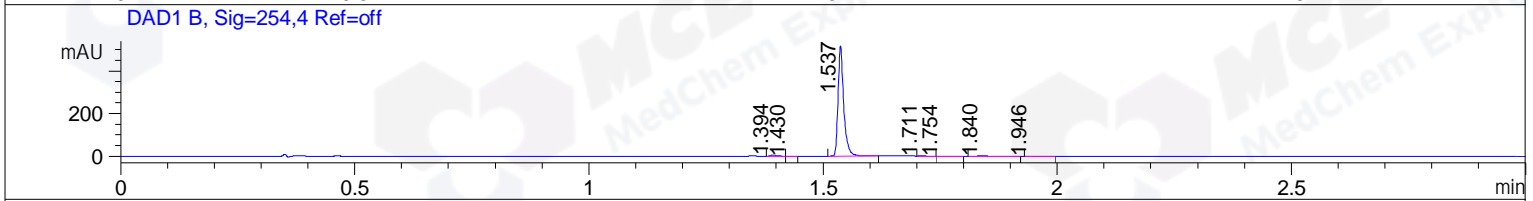
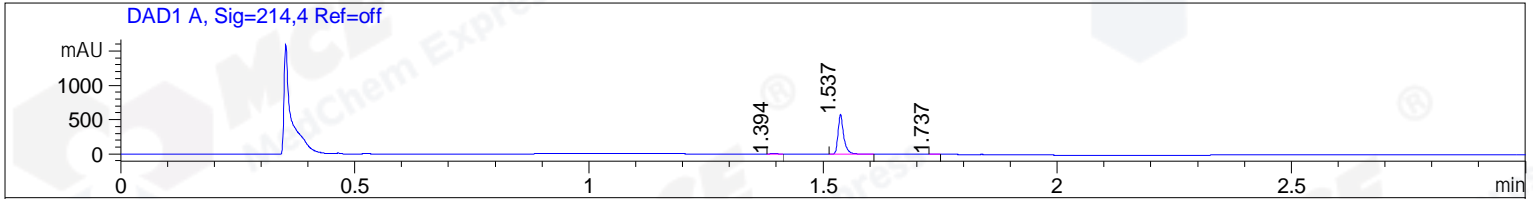


File ..03\Data\20190107\20190107\LP6060-055-1_1A.D Tgt Mass (CHM):
 Injection Date : 7 Jan 19 11:48 am +0800 Seq. Line : 37
 Sample Name : LP6060-055-1_1A Location : P1-D-02
 Acq. Operator : SYSTEM Inj : 1
 Spec. Reported : MS Integration Inj Volume : 1 ul
 Acq. Method : D:\LCMS03\Data\20190107\20190107\1-POS-3MIN.M
 Analysis Method : D:\LCMS03\Data\20190107\20190107\1-POS-3MIN.M
 Catalog No : HY-15849A Batch#36615
 Method Info : Mobile Phase: A: water(0.01%TFA) B:ACN(0.01%TFA)
 Gradient: 5% to 95%B within 1.3 min
 Flow Rate :1.8ml/min
 Column :SunFire C18, 4.6*50mm,3.5um A-RP-186
 Oven Temperature : 45C



Integration Results for DAD1 A, Sig=214,4 Ref=off

RetTim	Width	Area	Height	Area%	MS (+)
1.39	0.01	8.56	10.81	1.73	114
1.54	0.01	484.28	578.94	98.09	527
1.74	0.01	0.86	1.11	0.17	114

Integration Results for DAD1 B, Sig=254,4 Ref=off

RetTim	Width	Area	Height	Area%	MS (+)
1.39	0.01	3.91	4.87	0.88	114
1.43	0.01	0.13	0.17	0.03	114
1.54	0.01	433.57	512.01	98.10	527
1.71	0.01	0.35	0.46	0.08	114
1.75	0.02	0.38	0.31	0.09	114
1.84	0.02	3.09	2.44	0.70	114
1.95	0.02	0.52	0.38	0.12	114

Integration Results for ELS1 A, ELSD Signal

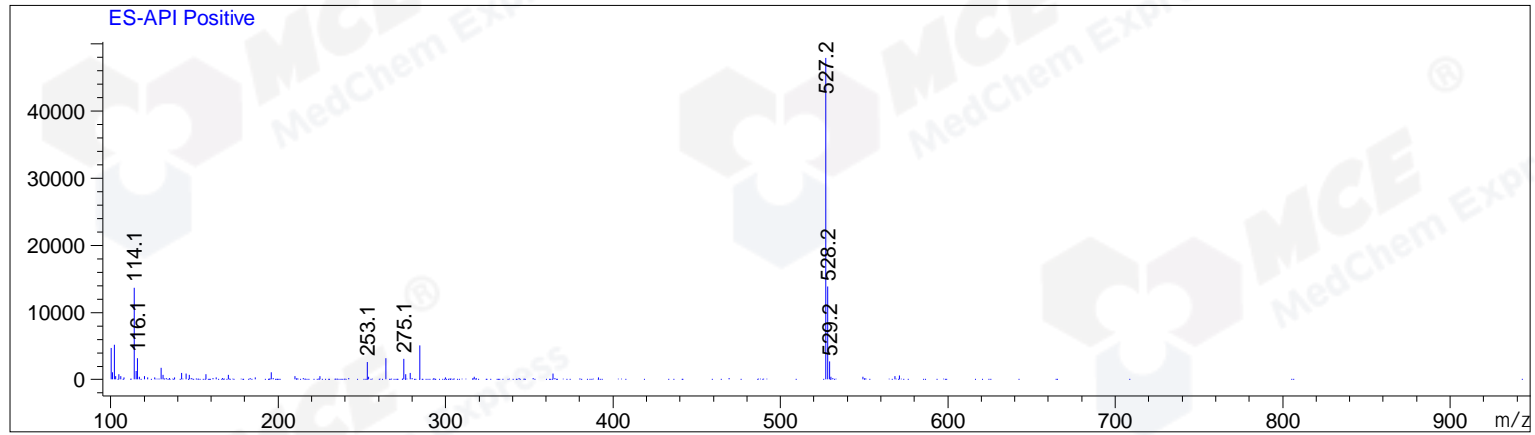
RetTim	Width	Area	Height	Area%	MS (+)
--------	-------	------	--------	-------	--------

Integration Results for MSD1 TIC, MS File

RetTim	Width	Area	Height	Area%	MS (+)
1.56	0.06	1160058.13	332864.03	100.00	527

Ret. Time: 1.56

<<<< POSITIVE SPECTRA >>>>



*** End of Report ***