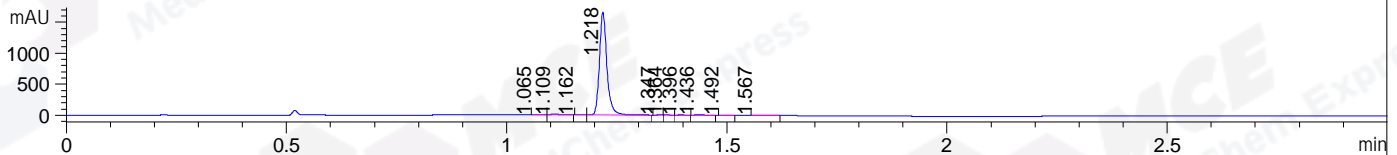
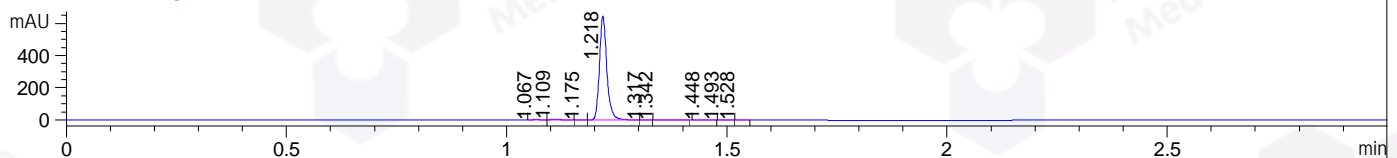


File ..S03\Data\20190523\20190523\KY6774-003-1_1.D Tgt Mass (CHM):
 Injection Date : 23 May 19 11:43 am +0800 Seq. Line : 35
 Sample Name : KY6774-003-1_1 Location : P1-C-10
 Acq. Operator : SYSTEM Inj : 1
 Spec. Reported : MS Integration Inj Volume : 5 ul
 Acq. Method : D:\LCMS03\Data\20190523\20190523\1-POS-3MIN.M
 Analysis Method : D:\LCMS03\Data\20190523\20190523\1-POS-3MIN.M
 Catalog No : HY-15891A Batch#41364
 Method Info : Mobile Phase: A: water(0.01%TFA) B:ACN(0.01%TFA)
 Gradient: 5% to 95%B within 1.3 min
 Flow Rate :1.8ml/min
 Column :SunFire C18, 4.6*50mm,3.5um A-RP-392
 Oven Temperature : 45C

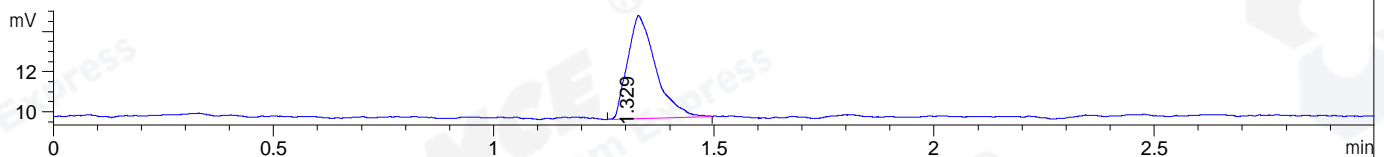
DAD1 A, Sig=214,4 Ref=off



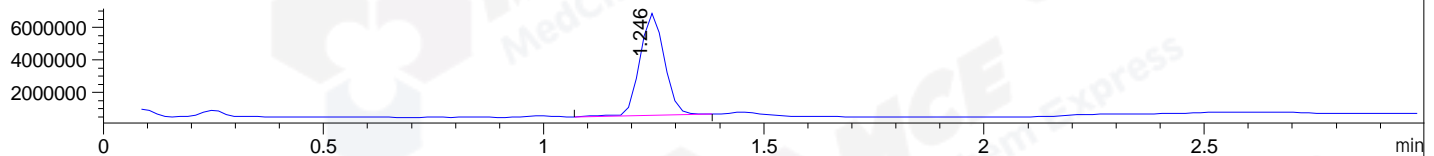
DAD1 B, Sig=254,4 Ref=off



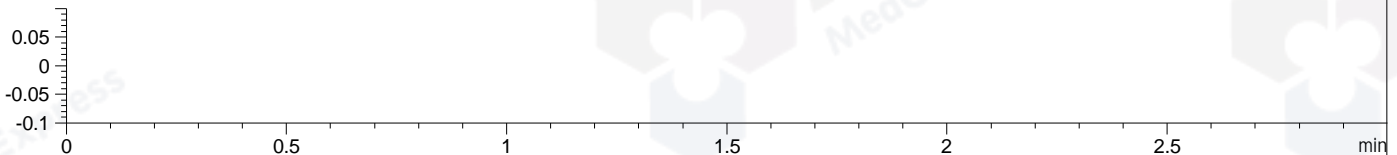
ELS1 A, ELSD Signal



MSD1 TIC, MS File ES-API, Pos, Scan, Frag: 70



Ion 1, MSD1 1, Target Mass 0 +H Positive, EIC=0.7:1.7



Integration Results for DAD1 A, Sig=214,4 Ref=off

RetTim	Width	Area	Height	Area%	MS (+)
1.07	0.02	0.38	0.29	0.02	145
1.11	0.02	6.97	6.50	0.36	145
1.16	0.02	0.12	0.11	0.01	114
1.22	0.02	1926.72	1646.64	98.84	398
1.35	0.01	0.27	0.30	0.01	114
1.36	0.01	0.34	0.43	0.02	114
1.40	0.02	2.18	2.28	0.11	114
1.44	0.02	10.23	8.77	0.52	114
1.49	0.02	1.08	1.03	0.06	114
1.57	0.02	1.10	0.87	0.06	114

Integration Results for DAD1 B, Sig=254,4 Ref=off

RetTim	Width	Area	Height	Area%	MS (+)
1.07	0.02	0.85	0.78	0.11	145
1.11	0.02	3.63	3.27	0.48	145
1.18	0.01	0.07	0.07	0.01	114
1.22	0.02	745.94	642.56	99.18	398

1.32	0.01	0.21	0.24	0.03	398
1.34	0.03	0.44	0.22	0.06	114
1.45	0.02	0.59	0.42	0.08	114
1.49	0.02	0.29	0.28	0.04	114
1.53	0.01	0.09	0.11	0.01	114

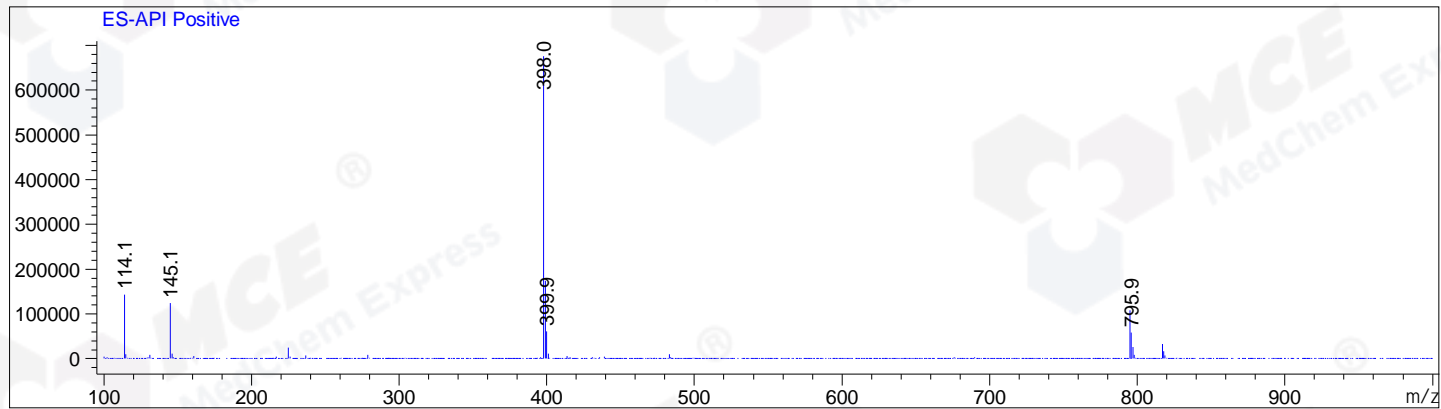
Integration Results for ELS1 A, ELSD Signal

RetTim	Width	Area	Height	Area%	MS (+)
1.33	0.06	22.69	5.12	100.00	398

Integration Results for MSD1 TIC, MS File

RetTim	Width	Area	Height	Area%	MS (+)
1.25	0.06	24304228.00	6272019.50	100.00	398

Ret. Time: 1.25 <<<< POSITIVE SPECTRA >>>>



*** End of Report ***