

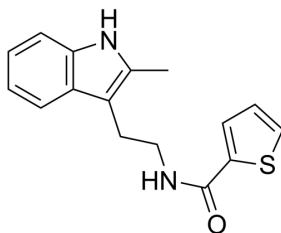
## CK-636

<b>Cat. No.:</b>	HY-15892
<b>CAS No.:</b>	442632-72-6
<b>Batch No.:</b>	308313
<b>Chemical Name:</b>	2-Thiophenecarboxamide, N-[2-(2-methyl-1H-indol-3-yl)ethyl]-

## PHYSICAL AND CHEMICAL PROPERTIES

<b>Molecular Formula:</b>	C <sub>16</sub> H <sub>16</sub> N <sub>2</sub> OS		
<b>Molecular Weight:</b>	284.38		
<b>Storage:</b>	Powder	-20°C	3 years
		4°C	2 years
	In solvent	-80°C	2 years
		-20°C	1 year

**Chemical Structure:**



## ANALYTICAL DATA

Appearance:	Light yellow to yellow (Solid)
<sup>1</sup> H NMR Spectrum:	Consistent with structure
LCMS:	Consistent with structure
Purity (LCMS):	99.92%
Conclusion:	The product has been tested and complies with the given specifications.

Caution: Product has not been fully validated for medical applications. For research use only.

Tel: 609-228-6898

Fax: 609-228-5909

E-mail: [tech@MedChemExpress.com](mailto:tech@MedChemExpress.com)

Address: 1 Deer Park Dr, Suite Q, Monmouth Junction, NJ 08852, USA