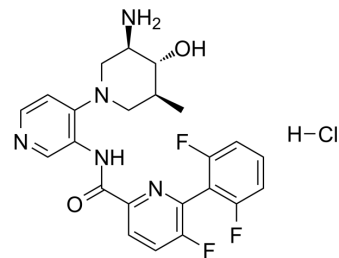


LGB321 monohydrochloride

Cat. No.:	HY-15901A
CAS No.:	1469925-36-7
Molecular Formula:	C ₂₃ H ₂₃ ClF ₃ N ₅ O ₂
Molecular Weight:	493.91
Target:	Pim; mTOR
Pathway:	JAK/STAT Signaling; PI3K/Akt/mTOR
Storage:	Please store the product under the recommended conditions in the Certificate of Analysis.



BIOLOGICAL ACTIVITY

Description

LGB321 monohydrochloride is a potent, selective, orally active and ATP competitive inhibitor of all three PIM kinases. LGB321 monohydrochloride inhibits proliferation, mTOR-C1 signaling and phosphorylation of BAD in a number of cell lines derived from diverse hematologic malignancies. LGB321 monohydrochloride can be used for the research of hematologic malignancies^[1].

REFERENCES

[1]. Garcia PD, et al. Pan-PIM kinase inhibition provides a novel therapy for treating hematologic cancers. Clin Cancer Res. 2014 Apr 1;20(7):1834-45.

Caution: Product has not been fully validated for medical applications. For research use only.

Tel: 609-228-6898

Fax: 609-228-5909

E-mail: tech@MedChemExpress.com

Address: 1 Deer Park Dr, Suite Q, Monmouth Junction, NJ 08852, USA