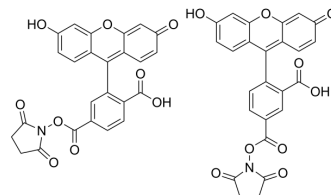


## 5(6)-FAM SE

<b>Cat. No.:</b>	HY-15937
<b>CAS No.:</b>	117548-22-8
<b>Molecular Formula:</b>	C <sub>25</sub> H <sub>15</sub> NO <sub>9</sub>
<b>Molecular Weight:</b>	473.39
<b>Target:</b>	Fluorescent Dye
<b>Pathway:</b>	Others
<b>Storage:</b>	-20°C, protect from light * In solvent : -80°C, 6 months; -20°C, 1 month (protect from light)



### SOLVENT & SOLUBILITY

#### In Vitro

DMSO : 83.33 mg/mL (176.03 mM); ultrasonic and warming and heat to 60°C)

Preparing Stock Solutions	Solvent Concentration	Mass		
		1 mg	5 mg	10 mg
	1 mM	2.1124 mL	10.5621 mL	21.1242 mL
	5 mM	0.4225 mL	2.1124 mL	4.2248 mL
	10 mM	0.2112 mL	1.0562 mL	2.1124 mL

Please refer to the solubility information to select the appropriate solvent.

#### In Vivo

- Add each solvent one by one: 10% DMSO >> 40% PEG300 >> 5% Tween-80 >> 45% saline  
Solubility: 6.25 mg/mL (13.20 mM); Suspended solution; Need ultrasonic
- Add each solvent one by one: 10% DMSO >> 90% (20% SBE-β-CD in saline)  
Solubility: 2.08 mg/mL (4.39 mM); Suspended solution; Need ultrasonic

### BIOLOGICAL ACTIVITY

#### Description

5(6)-FAM SE is an amine-reactive green fluorescent dye widely used for labeling proteins or other molecules that contain a primary or secondary aliphatic amine.

### REFERENCES

- Stafford JM, et al. Accessory factors facilitate the binding of glucocorticoid receptor to the phosphoenolpyruvate carboxykinase gene promoter. *J Biol Chem.* 2001 Oct 26;276(43):39885-91.
- Powell RD, et al. Combined fluorescent and gold immunoprobes: reagents and methods for correlative light and electron microscopy. *Microsc Res Tech.* 1998 Jul 1;42(1):2-12.

---

**Caution: Product has not been fully validated for medical applications. For research use only.**

Tel: 609-228-6898

Fax: 609-228-5909

E-mail: [tech@MedChemExpress.com](mailto:tech@MedChemExpress.com)

Address: 1 Deer Park Dr, Suite Q, Monmouth Junction, NJ 08852, USA