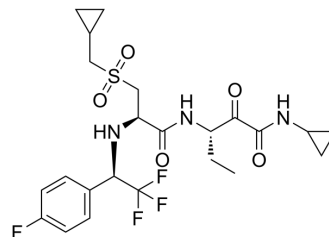


(S,R,R)-VBY-825

Cat. No.:	HY-15958A		
Molecular Formula:	C ₂₃ H ₂₉ F ₄ N ₃ O ₅ S		
Molecular Weight:	535.55		
Target:	Others		
Pathway:	Others		
Storage:	Powder	-20°C	3 years
		4°C	2 years
	In solvent	-80°C	6 months
		-20°C	1 month



BIOLOGICAL ACTIVITY

Description

(S,R,R)-VBY-825 is the isomer of VBY-825 (HY-15958), and can be used as an experimental control. VBY-825 is a novel reversible inhibitor of cathepsin with high inhibition of cathepsin B, L, S and V.

REFERENCES

[1]. Elie BT, et al. Identification and pre-clinical testing of a reversible cathepsin protease inhibitor reveals anti-tumor efficacy in a pancreatic cancer model. *Biochimie*. 2010 Nov;92(11):1618-24.

Caution: Product has not been fully validated for medical applications. For research use only.

Tel: 609-228-6898

Fax: 609-228-5909

E-mail: tech@MedChemExpress.com

Address: 1 Deer Park Dr, Suite Q, Monmouth Junction, NJ 08852, USA