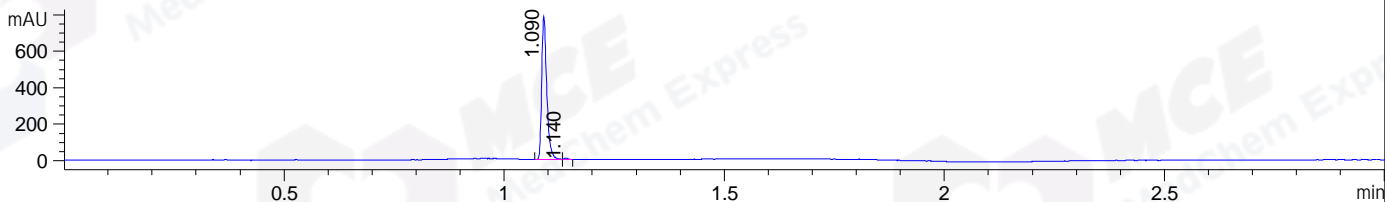
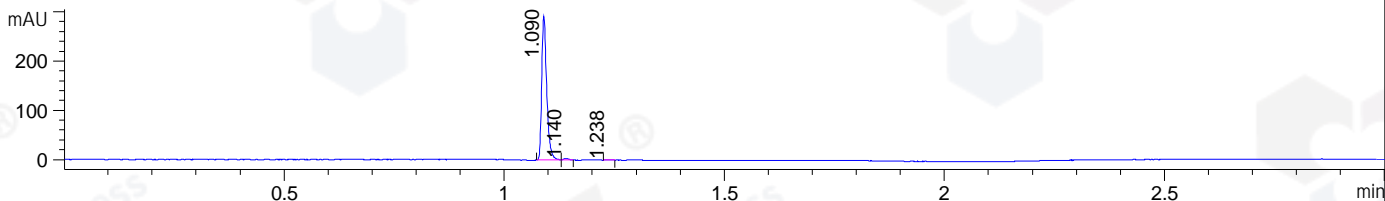


File ..\DATA\2020\20200427\940\BIZ2020-425-WMX5-.D Tgt Mass (CHM):
 Injection Date : 27 Apr 20 12:45 pm +0800 Seq. Line : 51
 Sample Name : BIZ2020-425-WMX5 Location : P1-D-07
 Acq. Operator : ZJ_1432 Inj : 1
 Spec. Reported : MS Integration Inj Volume : 0.25 ul
 Acq. Method : D:\Chem32\1\data\2020\20200427\940\1-POS-3MIN.M
 Analysis Method : D:\CHEM32\1\DATA\2020\20200427\940\1-POS-3MIN.M
 Catalog No : HY-15959
 Method Info : Mobile Phase: A: water(0.01%TFA) B:ACN(0.01%TFA)
 Gradient: 5% to 95%B within 1.3 min
 Flow Rate :1.8ml/min
 Column :SunFire C18, 4.6*50mm,3.5um A-RP-607
 Oven Temperature : 45□

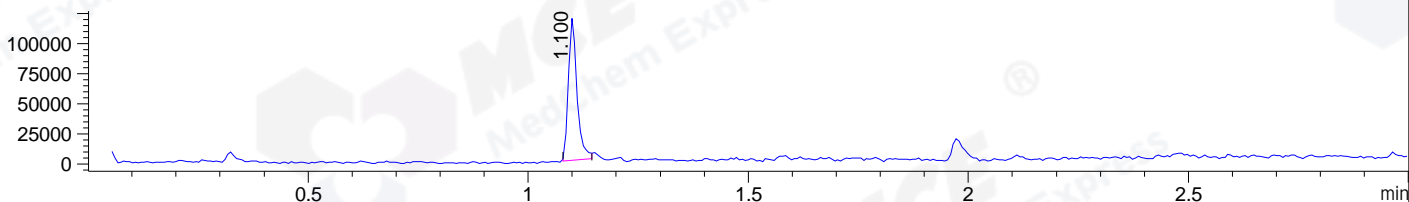
DAD1 B, Sig=214,4 Ref=off



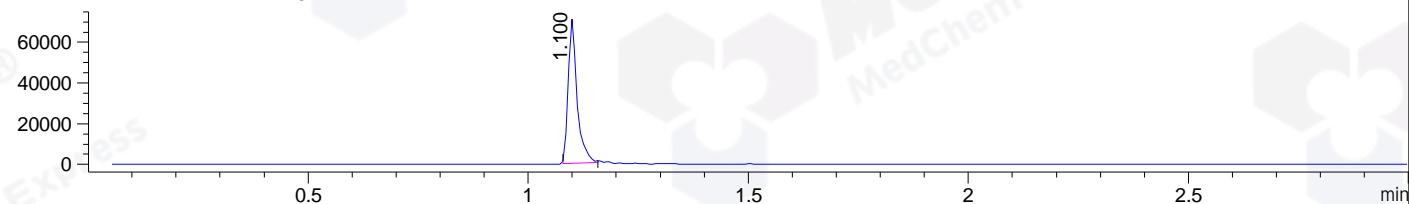
DAD1 C, Sig=254,4 Ref=off



MSD1 TIC, MS File ES-API, Pos, Scan, Frag: 70



Ion 346, MSD1 346, Target Mass 345 +H Positive, EIC=345.7:346.7



Integration Results for DAD1 B, Sig=214,4 Ref=off

| RetTim | Width | Area | Height | Area% | MS (+) |
|--------|-------|--------|--------|-------|--------|
| 1.09 | 0.01 | 630.95 | 787.19 | 99.29 | 346 |
| 1.14 | 0.01 | 4.49 | 6.55 | 0.71 | 346 |

Integration Results for DAD1 C, Sig=254,4 Ref=off

| RetTim | Width | Area | Height | Area% | MS (+) |
|--------|-------|--------|--------|-------|--------|
| 1.09 | 0.01 | 232.62 | 293.21 | 98.64 | 346 |
| 1.14 | 0.01 | 2.55 | 3.40 | 1.08 | 346 |
| 1.24 | 0.01 | 0.67 | 0.93 | 0.28 | ND |

Integration Results for MSD1 TIC, MS File

| RetTim | Width | Area | Height | Area% | MS (+) |
|--------|-------|-----------|-----------|--------|--------|
| 1.10 | 0.02 | 163230.84 | 118678.30 | 100.00 | 346 |

Ret. Time: 1.10

<<<< POSITIVE SPECTRA >>>>

ES-API Positive

