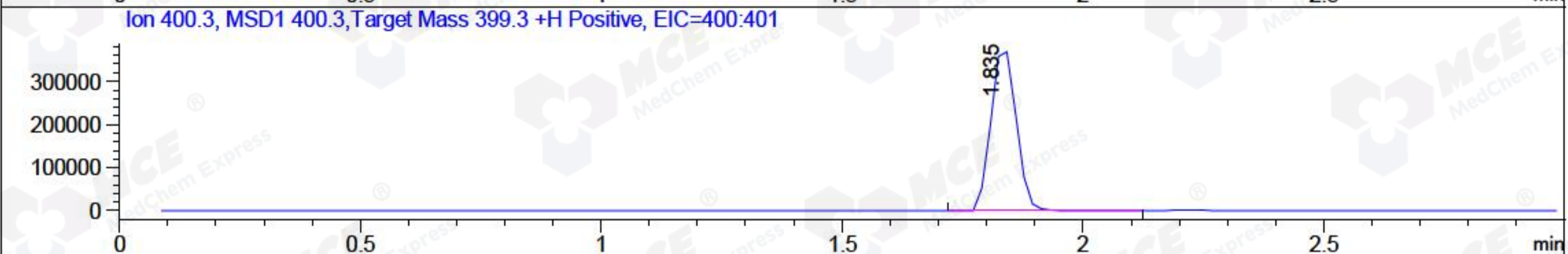
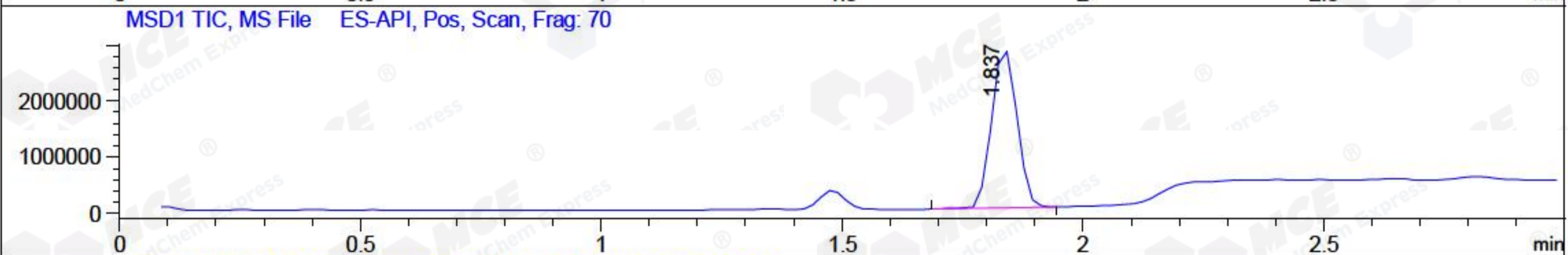
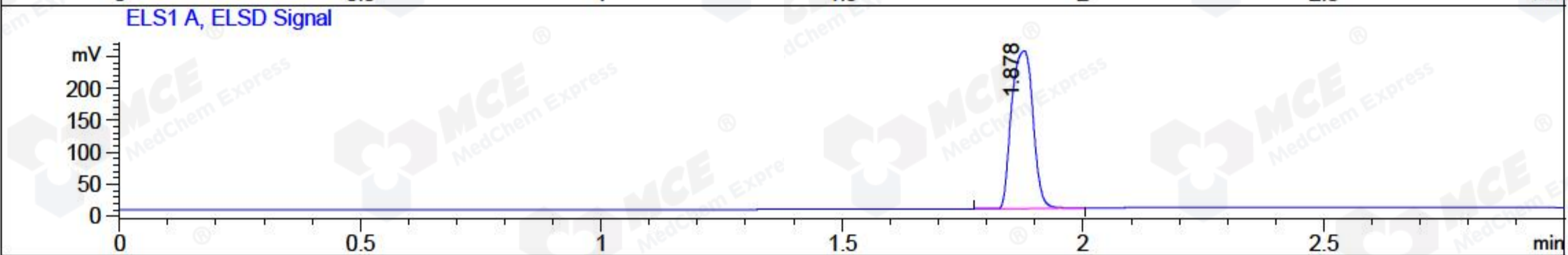
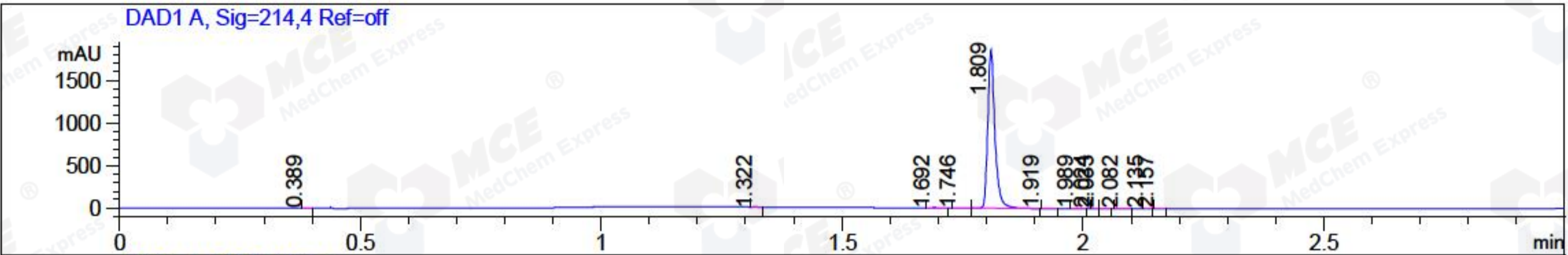


File ..\2018\20180316\20180316\CPK2018-316-14093.D Tgt Mass (CHM):  
 Injection Date : 16 Mar 18 4:31 pm +0800 Seq. Line : 82  
 Sample Name : CPK2018-316-14093 Location : P2-A-08  
 Acq. Operator : SYSTEM Inj : 1  
 Spec. Reported : MS Integration Inj Volume : 1 ul  
 Acq. Method : D:\LCMS03\Data\2018\20180316\20180316\1-POS-3MIN.M  
 Analysis Method : D:\LCMS03\Data\2018\20180316\20180316\1-POS-3MIN.M  
 Catalog No : HY-15996 Batch#14093  
 Method Info : Mobile Phase: A: water(0.01%TFA) B:ACN(0.01%TFA)  
 Gradient: 5% to 95%B within 1.3 min  
 Flow Rate :1.8ml/min  
 Column :SunFire C18, 4.6\*50mm,3.5um A-RP-186  
 Oven Temperature : 45C



Integration Results for DAD1 A, Sig=214,4 Ref=off

RetTim	Width	Area	Height	Area%	MS (+)
0.39	0.01	0.38	0.51	0.02	157
1.32	0.02	0.56	0.62	0.03	157
1.69	0.01	3.62	3.72	0.19	233
1.75	0.01	2.77	3.04	0.14	233
1.81	0.02	1917.47	1849.52	99.11	354
1.92	0.02	0.51	0.44	0.03	105
1.99	0.02	1.58	1.62	0.08	105
2.02	0.01	0.87	1.35	0.05	105
2.03	0.01	2.66	1.35	0.14	105
2.08	0.02	0.95	0.85	0.05	105
2.14	0.01	1.75	2.47	0.09	105
2.16	0.01	1.60	2.07	0.08	105

Integration Results for ELS1 A, ELSD Signal

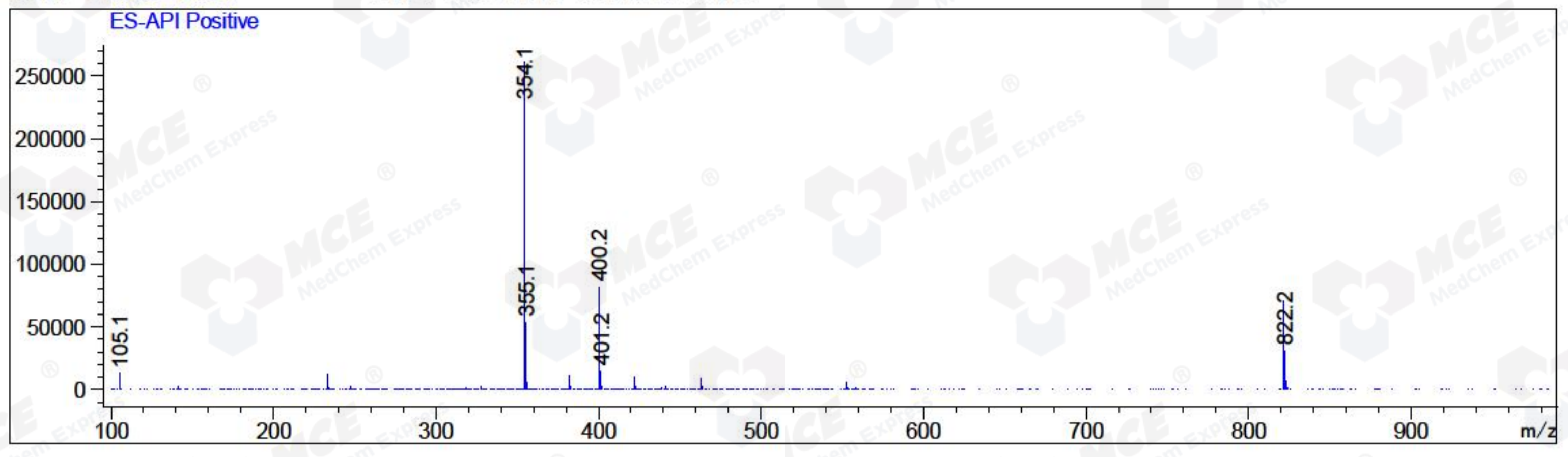
RetTim	Width	Area	Height	Area%	MS (+)
1.88	0.05	762.71	247.27	100.00	354

## Integration Results for MSD1 TIC, MS File

RetTim	Width	Area	Height	Area%	MS (+)
1.84	0.06	10345468.00	2837590.75	100.00	354

Ret. Time: 1.84

<<<< POSITIVE SPECTRA >>>>



\*\*\* End of Report \*\*\*