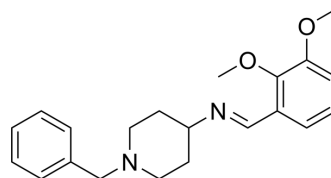


SEW06622

Cat. No.:	HY-160037
CAS No.:	261349-28-4
Molecular Formula:	C ₂₁ H ₂₆ N ₂ O ₂
Molecular Weight:	338.44
Target:	Beta-secretase
Pathway:	Neuronal Signaling
Storage:	Please store the product under the recommended conditions in the Certificate of Analysis.



BIOLOGICAL ACTIVITY

Description	SEW06622 is a BACE-1 inhibitor with an IC ₅₀ value of 6.3 μM and can be used in Alzheimer's disease research ^[1] .
--------------------	--

REFERENCES

[1]. Sharma P, et al. Design and development of multitarget-directed N-Benzylpiperidine analogs as potential candidates for the treatment of Alzheimer's disease. Eur J Med Chem. 2019 Apr 1;167:510-524.

Caution: Product has not been fully validated for medical applications. For research use only.

Tel: 609-228-6898

Fax: 609-228-5909

E-mail: tech@MedChemExpress.com

Address: 1 Deer Park Dr, Suite Q, Monmouth Junction, NJ 08852, USA