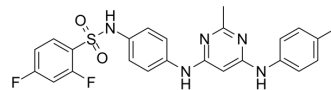


SQLE-IN-1

| | | | |
|--------------------|--|-------|----------|
| Cat. No.: | HY-160093 | | |
| CAS No.: | 1019169-83-5 | | |
| Molecular Formula: | C ₂₄ H ₂₁ F ₂ N ₅ O ₂ S | | |
| Molecular Weight: | 481.52 | | |
| Target: | PTEN; Akt; PI3K | | |
| Pathway: | PI3K/Akt/mTOR | | |
| Storage: | Powder | -20°C | 3 years |
| | | 4°C | 2 years |
| | In solvent | -80°C | 6 months |
| | | -20°C | 1 month |



SOLVENT & SOLUBILITY

In Vivo

- Add each solvent one by one: 10% DMSO >> 40% PEG300 >> 5% Tween-80 >> 45% saline
Solubility: ≥ 1.88 mg/mL (3.90 mM); Clear solution
- Add each solvent one by one: 10% DMSO >> 90% corn oil
Solubility: ≥ 1.88 mg/mL (3.90 mM); Clear solution

BIOLOGICAL ACTIVITY

Description

SQLE-IN-1 (compound 19) is a squalene epoxidase (SQLE) inhibitor. SQLE-IN-1 inhibits the proliferation and migration of Huh7 cells. SQLE-IN-1 inhibits the cell cholesterol generation. SQLE-IN-1 increases the expression of PTEN and inhibits PI3K and AKT^[1].

REFERENCES

[1]. Liu, Yayun, et al. Novel squalene epoxidase inhibitor and application thereof in preparation of anti-liver cancer drugs. China, CN116987037. 2023-11-03.

Caution: Product has not been fully validated for medical applications. For research use only.

Tel: 609-228-6898

Fax: 609-228-5909

E-mail: tech@MedChemExpress.com

Address: 1 Deer Park Dr, Suite Q, Monmouth Junction, NJ 08852, USA