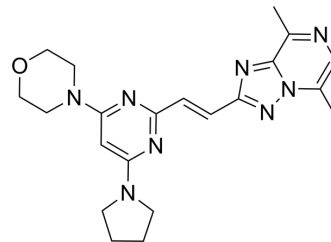


## PDM-042

|                    |                                                                                           |
|--------------------|-------------------------------------------------------------------------------------------|
| Cat. No.:          | HY-160111                                                                                 |
| CAS No.:           | 1404488-48-7                                                                              |
| Molecular Formula: | C <sub>21</sub> H <sub>26</sub> N <sub>8</sub> O                                          |
| Molecular Weight:  | 406.48                                                                                    |
| Target:            | Phosphodiesterase (PDE)                                                                   |
| Pathway:           | Metabolic Enzyme/Protease                                                                 |
| Storage:           | Please store the product under the recommended conditions in the Certificate of Analysis. |



### BIOLOGICAL ACTIVITY

|                           |                                                                                                                                                                                                                                                                                                                                                             |
|---------------------------|-------------------------------------------------------------------------------------------------------------------------------------------------------------------------------------------------------------------------------------------------------------------------------------------------------------------------------------------------------------|
| Description               | PDM-042 is a potent, selective, and orally active phosphodiesterase 10A (PDE10A) inhibitor. PDM-042 shows potent inhibitory activities for human and rat PDE10A with IC <sub>50</sub> values of less than 1 nM and more than 1000-fold selectivity against other phosphodiesterases. PDM-042 can be used for the research of schizophrenia <sup>[1]</sup> . |
| IC <sub>50</sub> & Target | IC <sub>50</sub> : <math>\lt; 1\text{ nM}</math> (for human and rat PDE10A) <sup>[1]</sup>                                                                                                                                                                                                                                                                  |

### REFERENCES

[1]. Arakawa K, et al. Pharmacological characterization of a novel potent, selective, and orally active phosphodiesterase 10A inhibitor, PDM-042 [(E)-4-(2-(2-(5,8-dimethyl-1,2,4-triazolo[1,5-a]pyrazin-2-yl)vinyl)-6-(pyrrolidin-1-yl)pyrimidin-4-yl)morpholine] in rats: potential for the treatment of schizophrenia. *Pharmacol Res Perspect*. 2016 Jun 10;4(4):e00241.

**Caution: Product has not been fully validated for medical applications. For research use only.**

Tel: 609-228-6898

Fax: 609-228-5909

E-mail: tech@MedChemExpress.com

Address: 1 Deer Park Dr, Suite Q, Monmouth Junction, NJ 08852, USA