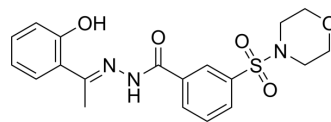


LSD1-IN-29

Cat. No.:	HY-160183
CAS No.:	1496573-83-1
Molecular Formula:	C ₁₉ H ₂₁ N ₃ O ₅ S
Molecular Weight:	403.45
Target:	Histone Demethylase
Pathway:	Epigenetics
Storage:	Please store the product under the recommended conditions in the Certificate of Analysis.



BIOLOGICAL ACTIVITY

Description

LSD1-IN-29 (compound 6) is a Lysine specific demethylase 1 (LSD1) inhibitor with the IC₅₀ of 19 nM^[1].

REFERENCES

[1]. Sorna V, et al. High-throughput virtual screening identifies novel N'-(1-phenylethylidene)-benzohydrazides as potent, specific, and reversible LSD1 inhibitors. *J Med Chem.* 2013;56(23):9496-9508.

Caution: Product has not been fully validated for medical applications. For research use only.

Tel: 609-228-6898

Fax: 609-228-5909

E-mail: tech@MedChemExpress.com

Address: 1 Deer Park Dr, Suite Q, Monmouth Junction, NJ 08852, USA