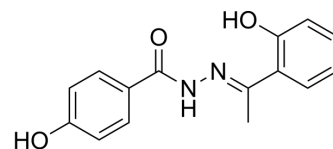


## LSD1-IN-30

Cat. No.:	HY-160191		
CAS No.:	1289575-45-6		
Molecular Formula:	C <sub>15</sub> H <sub>14</sub> N <sub>2</sub> O <sub>3</sub>		
Molecular Weight:	270.28		
Target:	Histone Demethylase		
Pathway:	Epigenetics		
Storage:	Powder	-20°C	3 years
		4°C	2 years
	In solvent	-80°C	6 months
		-20°C	1 month



### SOLVENT & SOLUBILITY

In Vitro	DMSO : 100 mg/mL (369.99 mM; Need ultrasonic)				
		Solvent Concentration	Mass 1 mg	5 mg	10 mg
	Preparing Stock Solutions	1 mM	3.6999 mL	18.4993 mL	36.9987 mL
		5 mM	0.7400 mL	3.6999 mL	7.3997 mL
		10 mM	0.3700 mL	1.8499 mL	3.6999 mL
Please refer to the solubility information to select the appropriate solvent.					
In Vivo	1. Add each solvent one by one: 10% DMSO >> 40% PEG300 >> 5% Tween-80 >> 45% saline Solubility: 2.5 mg/mL (9.25 mM); Clear solution; Need ultrasonic				
	2. Add each solvent one by one: 10% DMSO >> 90% corn oil Solubility: 2.5 mg/mL (9.25 mM); Clear solution; Need ultrasonic				

### BIOLOGICAL ACTIVITY

Description	LSD1-IN-30 (compound 3) is a potent inhibitor of lysine-specific demethylase 1 (LSD1), with the IC <sub>50</sub> value of 0.291 μM <sup>[1]</sup> .
IC <sub>50</sub> & Target	LSD1 0.291 μM (IC <sub>50</sub> )

### REFERENCES

[1]. Venkataswamy Sorna, et al. High-Throughput Virtual Screening Identifies Novel N<sup>∞</sup>(1-Phenylethylidene)-benzohydrazides as Potent, Specific, and Reversible LSD1

**Caution: Product has not been fully validated for medical applications. For research use only.**

Tel: 609-228-6898

Fax: 609-228-5909

E-mail: [tech@MedChemExpress.com](mailto:tech@MedChemExpress.com)

Address: 1 Deer Park Dr, Suite Q, Monmouth Junction, NJ 08852, USA